



TASPB

Tameside Adult Safeguarding
Partnership Board



TASPB Tiered Risk Assessment Model (TRAM) Protocol

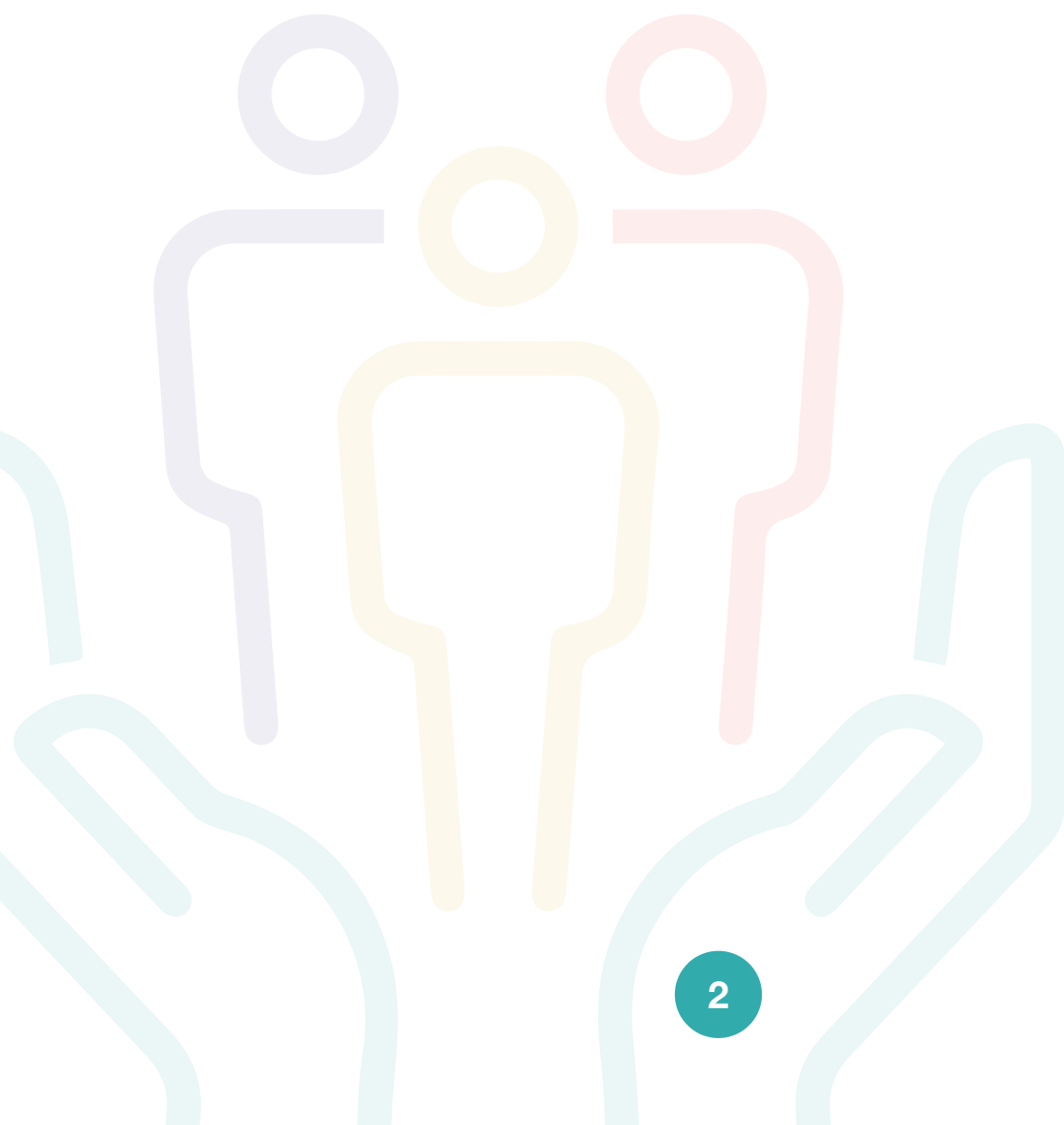
The protocol is designed to support any practitioner working with adults where there is a high level of risk that would benefit from joint multi-agency management and senior oversight of risk management strategies.

October 2025

Review Date March 2026

Contents

What is TRAM	3
Why do we use TRAM	3
When to use TRAM	3
Making Safeguarding Personal	3
Understanding Risk Levels	4
Team Around the Adult (TAA)	5
Complex and High Risk Panel (CaHRP)	5
Steps in TRAM	7



TASPB Tiered Risk Assessment Model (TRAM) Protocol

What is TRAM?

TRAM stands for Tiered Risk Assessment Model.

It helps professionals work together to support adults who have capacity to make decisions about their care and support needs and the risk to their wellbeing would benefit from joint multi-agency management and senior oversight of risk management strategies.

Why do we use TRAM?

TRAM helps teams understand and jointly manage risks to adults. It makes sure everyone works together and listens to the adult involved.

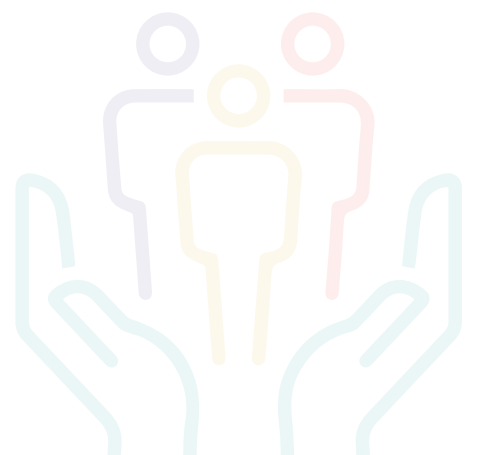
When to Use TRAM

Use this protocol when:

- There's risk of abuse, neglect, or self-harm and the person declines help and is still at risk
- The person frequently uses services or causes harm to others

Making Safeguarding Personal

It is vital that the individual has as much control and choice as possible within the risk assessment and management process. Access to information and advice will assist the individual to make informed choices about support and will help them to weigh up the benefits and consequences of different options



TASPB Tiered Risk Assessment Model (TRAM) Protocol

Understanding Risk Levels

There are different levels of risk: **Standard, Moderate and High**. Each level needs a different kind of support and action.

Standard risk – can be managed by individual organisations

Standard Risk indicates that there may be some quality-of-life issues, but low risks to an individual's health and wellbeing with very limited need for input from other agencies. Each agency is responsible for the early identification and assessment of any wider risk that require the sharing of information.

Moderate risk – may need a multi-agency response and a Team Around the Adult (TAA) meeting may be required.

Moderate Risk indicates that there are some wider risks to an individual's health and wellbeing that need support from a range of agencies. These cases are managed and prioritized on an ongoing basis through TAA meetings.

Where the risks cannot be managed or mitigated through regular TAA meetings or where 'mainstream' adult safeguarding processes are not applicable then a referral to the Adults Complex and High-Risk Panel (CaHRP) may be made. There must be evidence that agencies have already tried to work together to mitigate the risks but levels of risk and harm to self and others remain high due to factors such as non-engagement with services, exploitation by others etc.

CaHRP provides additional support to help problem solve cases and bring in senior safeguarding leads and heads of service/department for oversight of cases.

Before a referral to CaHRP is made there must be evidence that agencies have already tried to work together to mitigate the risks and other options such as Section 42 safeguarding process; Section 9 Care and Support Assessment and/or Section 11 refusal of assessment have been considered. If the individual does not have mental capacity, the TAA process is not appropriate and Best Interests Decision Making processes should be followed.

At the initial Team Around the Adult meeting, all steps that have been taken to engage the individual must be recorded and an accurate, up to date risk assessment/management tool must be completed.

High Risk indicates that there are significant risks to an individual's health and wellbeing likely to need imminent input from a range of services.

The same steps as taken for Moderate risk are applied in these situations.

TASPB Tiered Risk Assessment Model (TRAM) Protocol

Team Around the Adult

Professionals from different services form a team to support the adult. They share information and make plans together.

Any organisation can call a TAA meeting. It is an expectation that all agencies support the person who has called the TAA meeting by:-

- attending the meetings
- sharing information
- contributing to discussions to find solutions to help the Adult concerned
- complete any actions from the meeting in a timely manner.

It is acknowledged that organisations may not have a representative to attend the TAA meeting due to other demands in the system. If this occurs, organisations are expected to respond to the request for information and contribute to the discussion as arranged with the professional calling the meeting. This could be either via an alternative date/time or a written contribution. The response should be timely to ensure that information can be shared with TAA meeting as appropriate and to **help find solutions to help the Adult concerned.**

When arranging a TAA meeting organisations should invite representatives, giving as much notice as possible and as much information as possible. This is to ensure that organisations can respond promptly and are proactive in their contribution to the discussions to **help find solutions to help the Adult concerned.**

Complex and High Risk Panel

Team Around the Adult Meetings **must** take place prior to referrals to CaHRP.

Organisations may have a process to sign off a CAHRP referral prior to sending to Panel, speak to your manager to learn more about your organisations process.

Complete the [CaRHP Referral](#) form and send to protectadult@tameside.gov.uk

The complex and high-risk panel meeting takes place on the 3rd Wednesday of each month.

TASPB Tiered Risk Assessment Model (TRAM) Protocol

An extraordinary CaHRP meeting can take place if the referring organisation(s) requests this when the risk could cause imminent significant harm to the Adult.

Organisations have a responsibility to follow up confirmation that the CaHRP referral has been included in the monthly CaHRP agenda.

A representative from the organisation submitting the referral will be invited to attend this meeting.

Senior Managers from Organisations meet to discuss the CaHRP referrals.

The representative will be asked to summarise the immediate concerns, what has worked so far for the Adult to minimise the risk and what the challenges are.

The CaHRP meeting will offer advice regarding actions to take to mitigate the risk.

TASPB Tiered Risk Assessment Model (TRAM) Protocol

Steps in TRAM

Any agency can start this TRAM process. This is to be used for cases that are high risk and the person has capacity in relation to decisions re the risk(s). These can be situations where there are issues that have complex needs that don't fit neatly into one service. They can also be situations where a Safeguarding Adult Enquiry has concluded and a protection plan has been identified but the Adult is not compliant with adopting the actions to help keep them safe.

In a situation when a Safeguarding Adult Enquiry has concluded and the protection plan has been agreed but the Adult is non-compliant with this, consideration needs to be given if a Complex and High-Risk Panel (CaHRP) referral is required as part of the protection plan.

Team Around the Adult Meeting (TAA)

Arranging the Team Around the Adult Meeting

Any agency may arrange a Team Around the Adult (TAA) this is a multi-agency meeting. The Lead Professional will invite all relevant agencies and it is **expected** that agencies attend. The Lead Professional is fluid and is usually the person who knows the Adult best.



The Team Around the Adult Meeting takes place

The Lead Professional does not hold all the risk and will co-ordinate the discussion with all professionals at the meeting. The expectation is that each agency will have a responsibility to participate and identify actions to respond to the risks. The meeting will also agree who will continue to be the Lead Professional to arrange further meetings in the TRAM process.

The risk assessment tool will be used at the TAA meeting to inform the actions that need to happen to keep the person safe. This provides a multi-agency response and a decision if a further TAA meeting is required
There are no set limits to how many TAA meetings are held.

If the risk(s) cannot be managed – complete the CaHRP Referral Form within the TAA meeting with all other agencies involved in order to refer to the Complex and High Risk Panel (CaHRP).



Send CaHRP Referral to the protectadult@tameside.gov.uk to be presented at the next CaHRP meeting

The meetings take place on the 3rd Wednesday of every month. If the TAA meeting has agreed that a more urgent meeting is required the protectadult@tameside.gov.uk should be emailed and the rationale provided



You will receive an invite to the CaHRP which you can attend with your line manager

For further information [Guidance for staff - TRAM and CaHRP](#)

TASPB Tiered Risk Assessment Model (TRAM) Protocol

Step Down

Where partners feel that the risks have been mitigated and can be managed at an acceptable level the case can be stepped down through the different levels of the TRAM Protocol. Where the adult has moved out of area, consideration should be given to any previous transient behaviours and where possible the case should remain open for a minimum of 3 months

Review Date: March 2026

