

Our Budget Explained

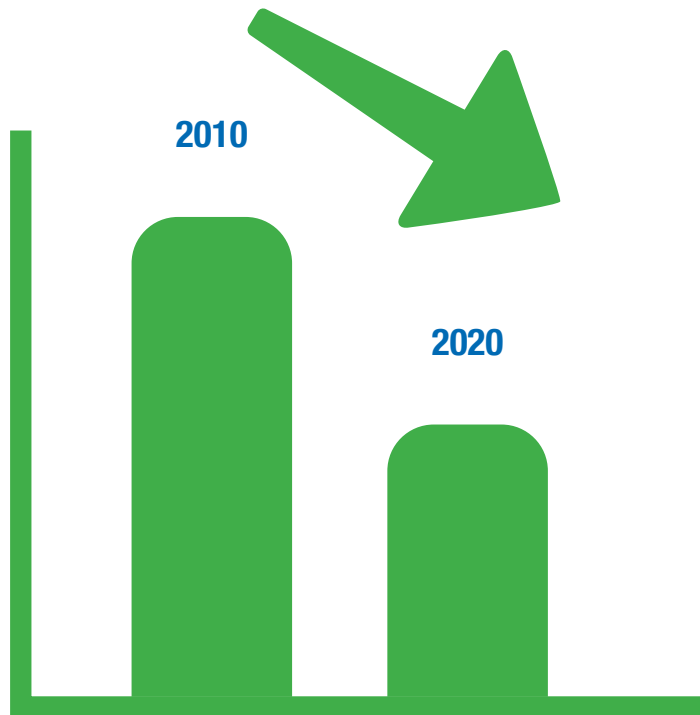


THE ONGOING CHALLENGE

2025
2026

English councils face a £2.3 billion funding gap in 2025/26, rising to £3.9 billion in 2026/27. **This is a £6.2 billion shortfall across the two years.**

Local sources of income, including council tax, business rates and sales, fees and charges have therefore had to become increasingly important as a source of income to local government, forming an increasing proportion of the budget.



Since 2010, Tameside Council has had to save **more than £237 million.**

This is due to a combination of rising costs, increasing demand for services and cuts in funding from central government.

Inflation continues to place significant pressures on our budgets. Money just doesn't go as far and increasing energy costs for buildings and street lighting as well as legacy impacts of Covid-19 continue to put pressures on our budget.

WHAT THE RISE IN COUNCIL TAX MEANS FOR OUR RESIDENTS

2025
2026

4.99%

Increase means households will pay extra per week

Band A	Band B	Band C	Band D
£1.17	£1.36	£1.55	£1.75
Band E	Band F	Band G	Band H
£2.14	£2.52	£2.91	£3.50

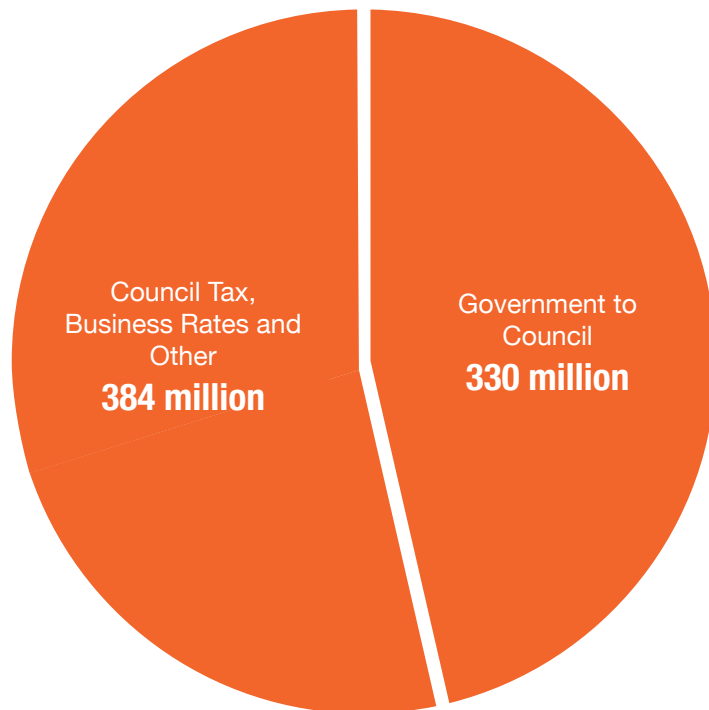


The additional income we raise from Council Tax will go straight back into services and especially those that support our most vulnerable residents such as providing a real living wage for our carers.

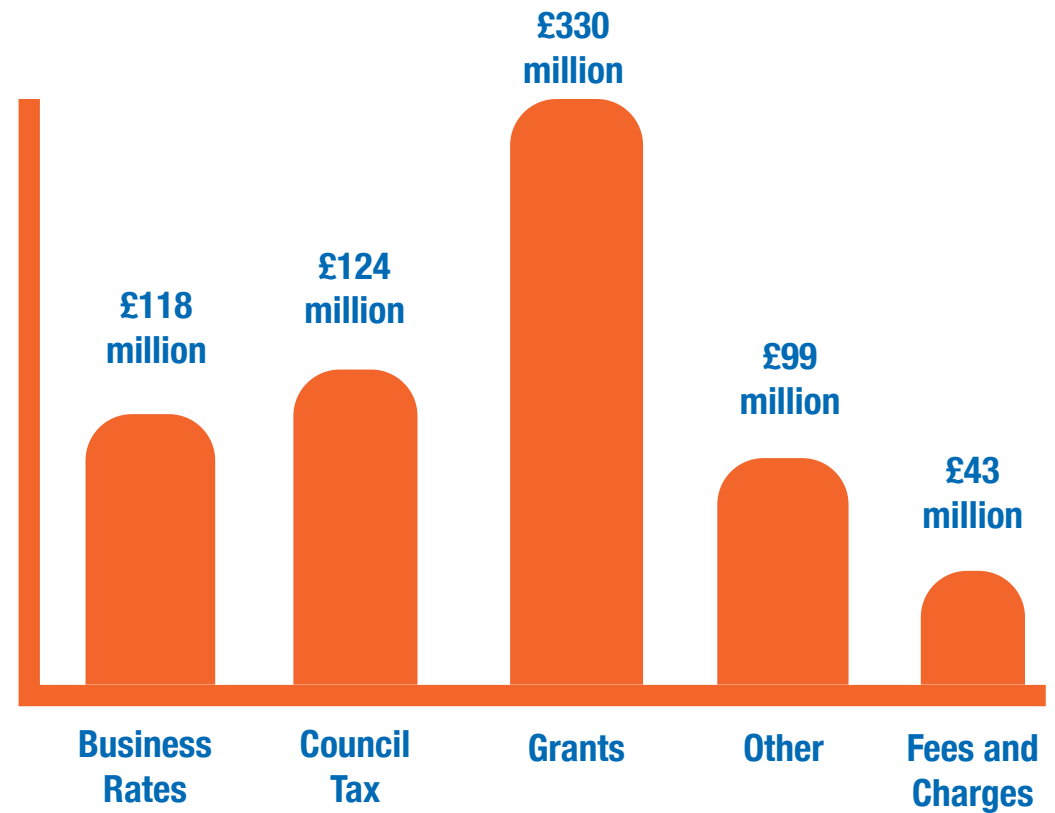
WHAT WILL WE SPEND AND WHERE DOES IT COME FROM?

2025
2026

Gross Annual Spend £714 million



Council Tax, Business Rates, Grants, Fees/Charges and Other

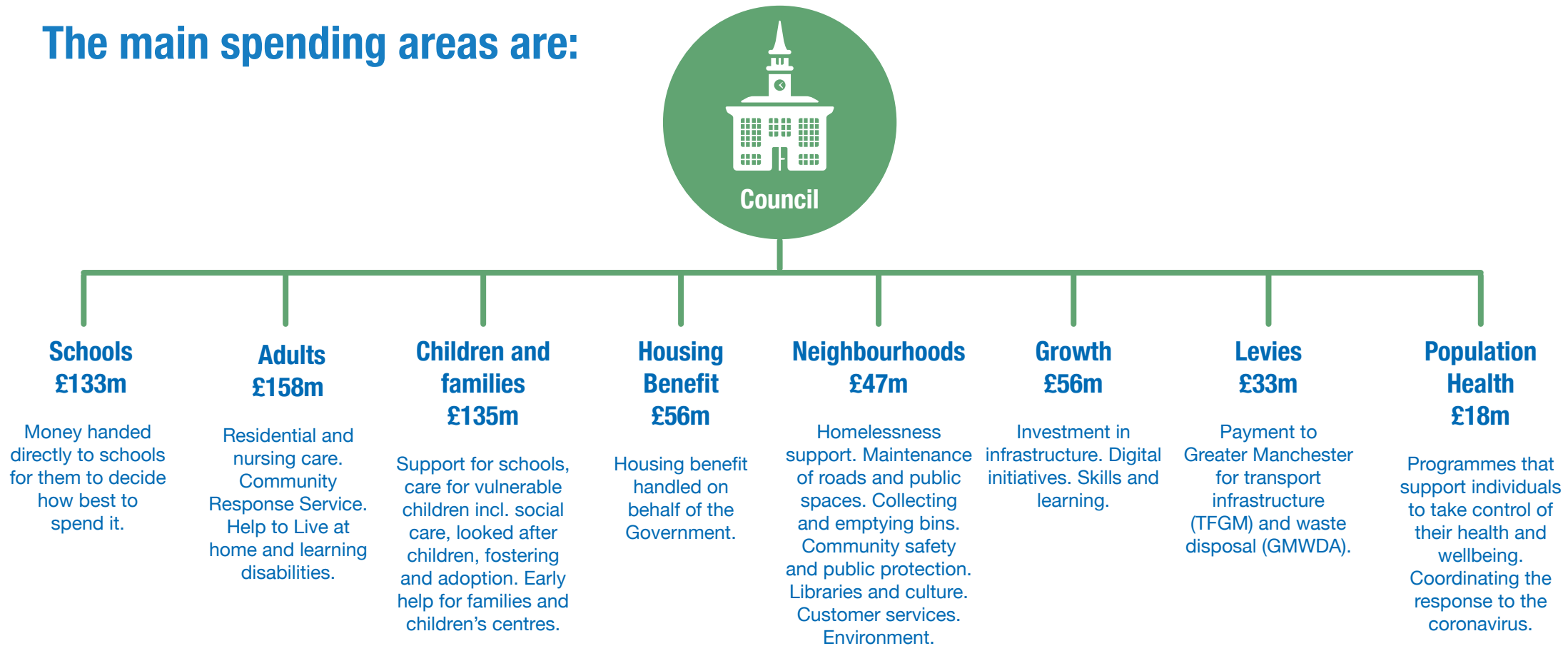


WHAT SERVICES DO WE DELIVER WITH THAT MONEY?

2025
2026

Tameside Council is responsible for the delivery of a range of services from residential and nursing care for the elderly, through to street cleaning and bin collections. Many Services are statutory, meaning we have a legal obligation to provide them.

The main spending areas are:



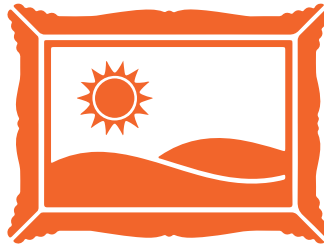
The council has limited influence over some areas of spending such as schools and housing benefits as they are set by the government. As such proposals to balance the budget have to be made from the other areas of spend.

EXAMPLES OF SERVICES PROVIDED IN A TYPICAL YEAR

2025
2026



Over **37,400 pupils** taught across **98 schools**



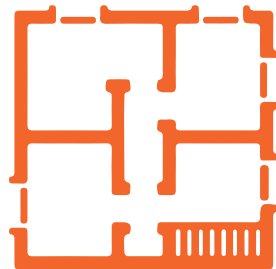
Over **200,400** visits to our libraries last year
Over **5,450** visits to our local studies and archives centre
Over **39,750** visits to Portland Basin museum
Over **1,700** visits to Astley Cheetham Art Gallery



Over **448,000** issues of physical and digital items from the library service
Over **300** physical and digital events in Culture
Over **669,000** engagements with cultural activities, events and venues both physically and digitally.



Maintain **26,000** street lights, **48,000** road drainage gullies, **1,155** kilometers of pavements, **758** kilometers of carriageways, **26** parks, **37** playgrounds and **15** Multi Use Games Areas, **32** sports pitches cut and marked out and inspect **35,000** trees on highways and green space



Dealt with over **700** planning applications
Over **750** Licensed Premises



Answered over **78,000 calls and webchats** to the contact centre last year



Over **11 million bins** collected
75,000 tonnes of household waste for recycling, composting and disposal
Emptied **50,000 domestic bins** and **200,000 recycling bins** per week
898 Street Litter Bins emptied at least twice per week
Over **4,000** complaints received regarding dumped waste

EXAMPLES OF SERVICES PROVIDED IN A TYPICAL YEAR

2025
2026



160,000
metres of ducting installed
for Digital Tameside



Over **8,000**
supported through
Housing Advice



Transport
Over 700
vulnerable residents each day



Over **150** Hackney Carriage
Vehicles Licensed
Over **600** Private Hire
Vehicles Licensed
Over **750** Licensed Drivers



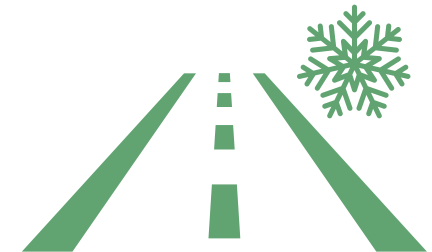
Maintain and operate a fleet of over
over **200** vehicles and items of plant



Over **2200**
residents supported to claim
Over **4 million**
pounds of welfare benefits
Over **80%**
successful representation at
benefits appeals



Over **1100**
households given emergency
support through welfare rights
Over **3,000**
welfare and debt cases
opened



Over **350km**
of carriageways treated during
winter gritting operations
Over **400** grit bins
270km of Public Rights of
Way (public footpaths)

EXAMPLES OF SERVICES PROVIDED IN A TYPICAL YEAR

2025
2026



Commission care for over
940 people
in residential or
nursing homes



Act as parent to over
**640 looked
after children**



1,271 households
assessed as needing support with
homelessness (prevention or relief)



We have visited or contacted over
2,300 new mothers
to offer help and advice



Provide support to over
3100 people
to live independently
and remain in their
own homes