

Stalybridge Multi-Storey Car Park

Please fill out one of the feedback forms or email comments to stalybridge.regeneration@tameside.gov.uk for more information please see tameside.gov.uk/stalybridgeregeneration






Tameside Metropolitan Borough Council is bringing forward proposals for a new multi-storey car park development in Stalybridge Town. Tameside is a unique place with a wealth of culture, history, and heritage. Forged strong and honest we are proud of the sights, sounds and foundations that make it a great

place to live, work, invest and visit. The proposed site is located at the existing Waterloo Road Public Car Park, in the town centre a few minute's walk from Stalybridge train station. The development aims to deliver enhanced parking provision in the town centre.

The building's design is inspired by Stalybridge's industrial heritage, featuring a dynamic façade clad in three tones of corten-effect, powder-coated aluminium. Aluminium fins of varying depths and colours create rhythm and movement, offering different appearances from changing perspectives. Fixed to rails on the

concrete slab, the fins balance openness with screening while enhancing the building's architectural expression.

-  **169no.** Car parking spaces
-  incl. **4no.** Electric car parking spaces
-  incl. **6no.** Accessible parking spaces

Stalybridge Multi-Storey Car Park

Please fill out one of the feedback forms or email comments to stalybridge.regeneration@tameside.gov.uk for more information please see tameside.gov.uk/stalybridgeregeneration



King Street looking North

Image for illustrative purposes only



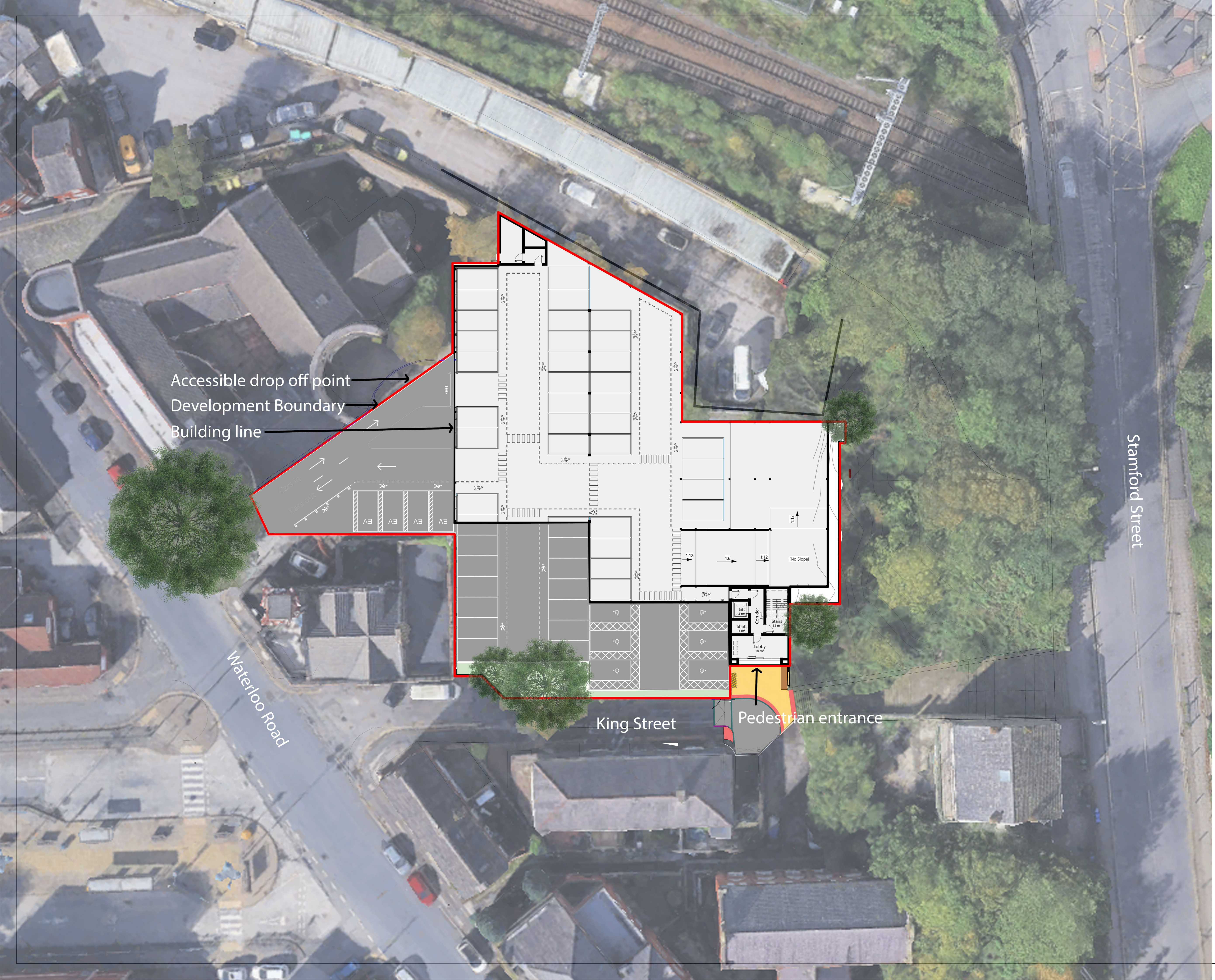
King Street - Pedestrian Entrance

Image for illustrative purposes only



Waterloo Road - Vehicle Entrance

Image for illustrative purposes only



Accessible drop off point →
 Development Boundary →
 Building line →

King Street
 Pedestrian entrance

Stamford Street

Waterloo Road

DISCLAIMER:
 TODD Architects confirm that recipients can only rely on approved controlled document formats in construction projects. Controlled document formats include original hard copy drawings issued by TODD Architects, or unprinted PDF/DWF images of drawings received from TODD Architects.
 TODD Architects cannot ensure the accuracy of drawings, used in an uncontrolled document format which may be altered or misinterpreted as a result of human error on the part of the recipient, or as a result of the incompatibility of computer systems when opening or printing computer aided drawings. Uncontrolled document formats include: computer aided design files, prints which have been created by the recipient from non-controlled file formats, photocopies of original hard copy drawings from TODD Architects, draft drawings supplied by TODD Architects for information purposes only.
 TODD Architects accept no responsibility for any loss or damage arising as a result of reliance by the recipient or any third party on uncontrolled document formats, reliance upon which will be entirely at the risk of the recipient.
 Contractors are responsible for the verification of all dimensions on site and the architect is to be informed of any discrepancy.
 Do not scale from this drawing.
 Use figured dimensions only.

PO1	14/07/2025	Issued for Information	WA	SL
Rev:	Date:	Description:	Drawn by:	Chkd by:
Client: Tameside Borough Council				
Project Name: Stalybridge Carpark				
Drawing Title: Level 00 - Car Floor Plan - Construction				
TODD Architects Floor Plans 14/07/2025 WA SL 1:200 A1				
DRAFT TODD				
Project No:	1084	Status:	S2 - Information	Revision:
Drawing No:	SW-TODD-20A-00-DR-A-20101			P01