

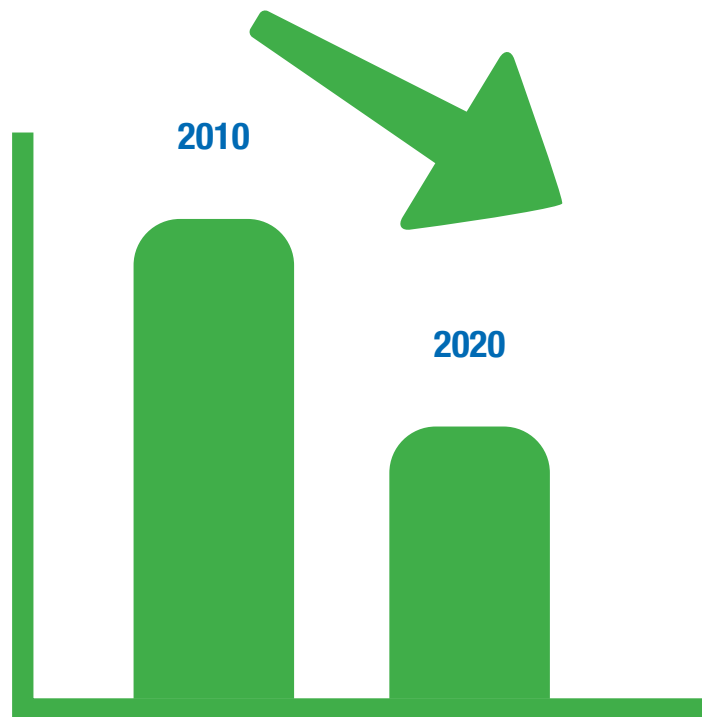
Our Budget Explained



THE ONGOING CHALLENGE

2026
2027

Local sources of income, including council tax, business rates and sales, fees and charges have had to become increasingly important as a source of income to local government, forming an increasing proportion of the budget.



Since 2010, Tameside Council has had to save **more than £235 million.**

This is due to a combination of rising costs, increasing demand for services and cuts in funding from central government.

Inflation continues to place significant pressures on our budgets. Money just doesn't go as far and increasing energy costs for buildings and street lighting as well as legacy impacts of Covid-19 continue to put pressures on our budget.

WHAT DID LAST YEAR'S COUNCIL TAX RISE MEAN FOR OUR RESIDENTS

2026
2027

4.99%

Increase last year meant that each week households paid an extra

Band A

£1.17

Band B

£1.36

Band C

£1.55

Band D

£1.75

Band E

£2.14

Band F

£2.52

Band G

£2.91

Band H

£3.50

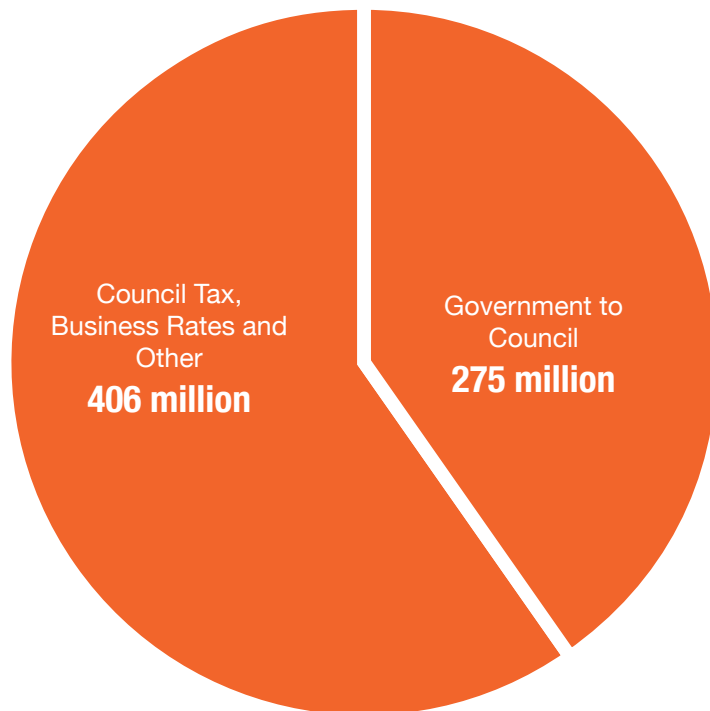


This additional income went straight back into our services, especially those which support our most vulnerable residents.

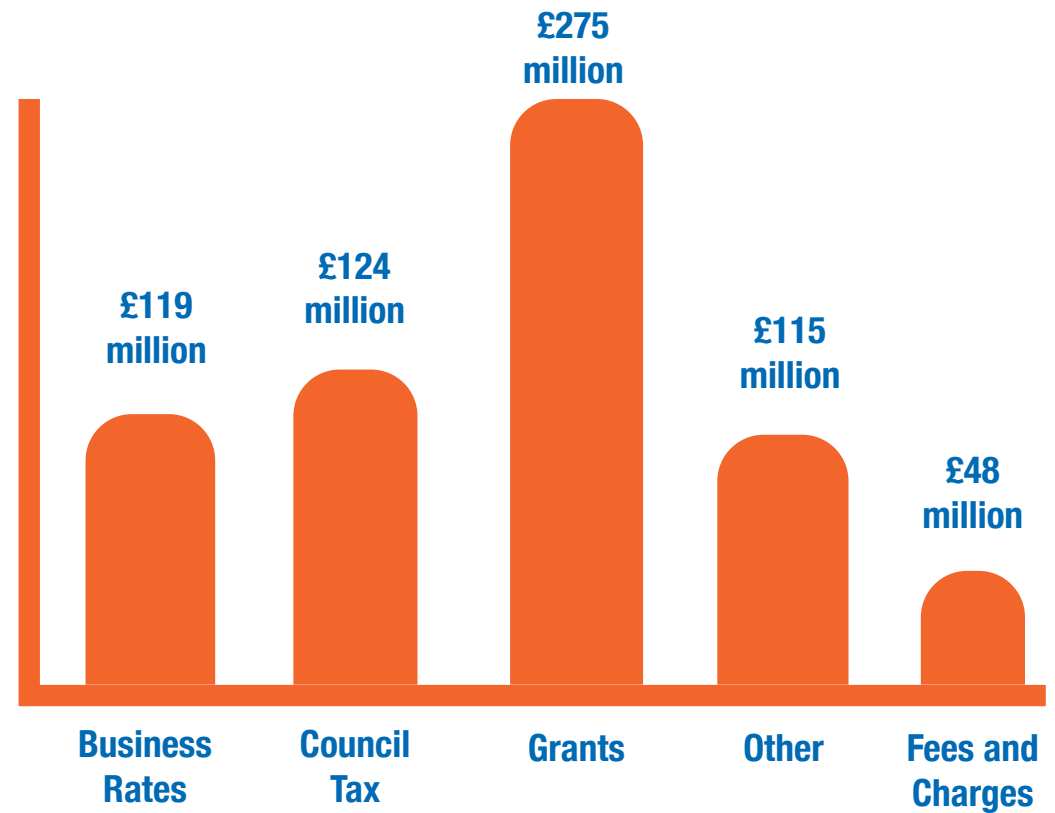
WHAT WE CURRENTLY SPEND AND WHERE DOES IT COME FROM

2026
2027

Gross Annual Spend £681 million



Council Tax, Business Rates, Grants, Fees/Charges and Other

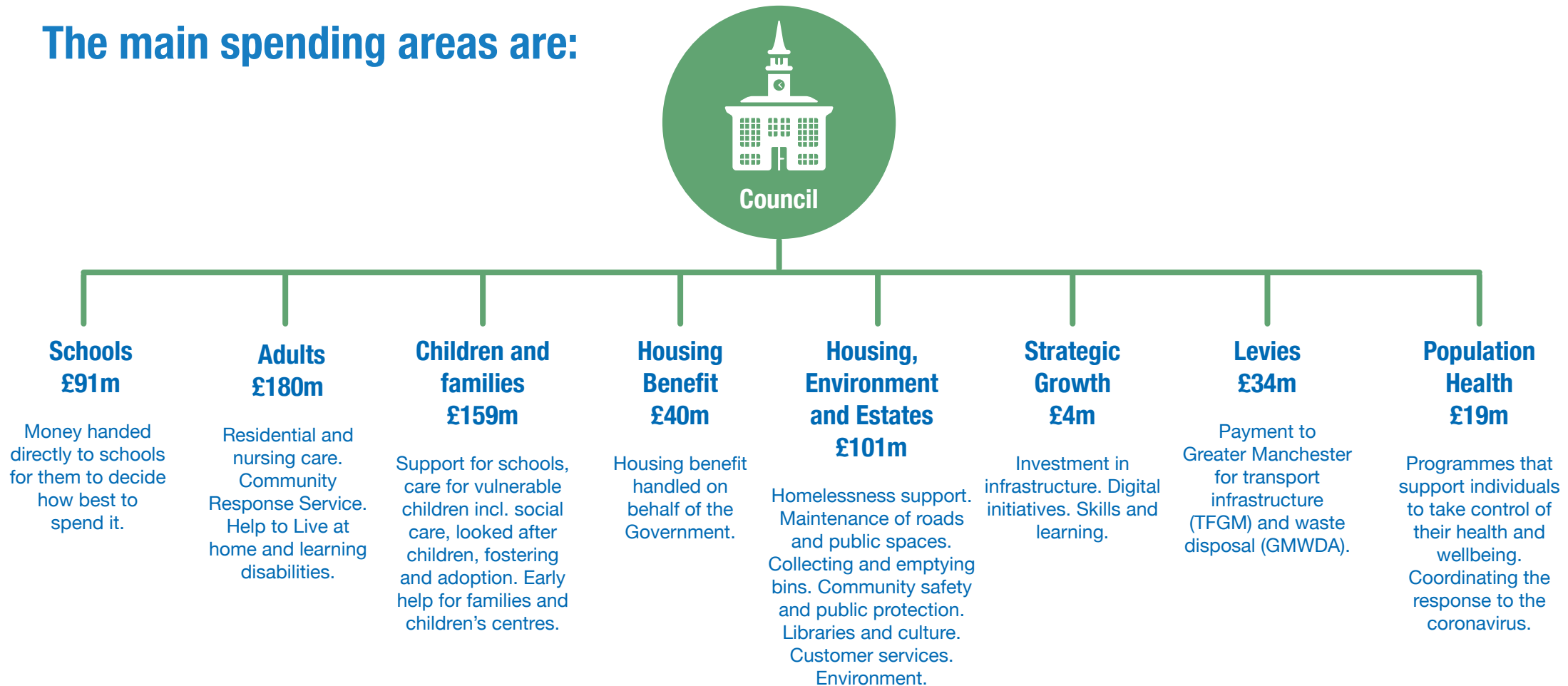


WHAT SERVICES DO WE DELIVER WITH THAT MONEY?

2026
2027

Tameside Council is responsible for the delivery of a range of services from residential and nursing care for the elderly, through to street cleaning and bin collections. Many Services are statutory, meaning we have a legal obligation to provide them.

The main spending areas are:



The council has limited influence over some areas of spending such as schools and housing benefits as they are set by the government. As such proposals to balance the budget have to be made from the other areas of spend.

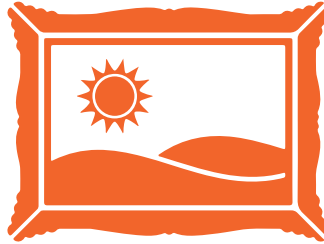
Please note, this is not a full list of outgoings and reflects the main areas of spend

EXAMPLES OF SERVICES PROVIDED LAST YEAR

2026
2027



Over **36,700 pupils** taught across **98 schools**



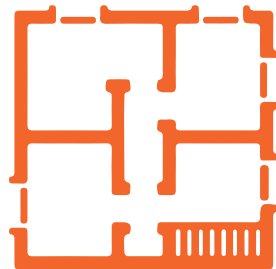
Over **355,500** visits to our libraries last year
63,800 visits to our local studies and archives centre
Over **102,500** visits to Portland Basin museum



Over **546,000** issues of physical and digital items from the library service
330 cultural events with **115,000** attendees



Maintain **25,600** street lights, almost **49,000** road drainage gullies, **1,153** kilometers of pavements, **707** kilometers of carriageways, **26** parks, **37** playgrounds and **17** Multi Use Games Areas, **32** sports pitches cut and marked out and inspect **35,000** trees on highways and green space



Processed almost **600** planning applications and over **600** licensed premises



Answered over **70,000 calls and webchats** to the contact centre last year



Almost **11 million bins** collected
Over **72,000 tonnes** of household waste for recycling, composting and disposal
Emptied **50,000 domestic bins** and **160,000 recycling bins** per week
Emptied **771** Street Litter Bins at least twice per week
Handled **3007** reports about fly tipping and carried out **451** fly tipping enforcements (this covers Statutory Notices, Warnings etc). **10** prosecutions, **289** FPN's for waste offences.

EXAMPLES OF SERVICES PROVIDED IN A TYPICAL YEAR

2026
2027



Almost **6,000**
supported through
Housing Advice



Support **1,165** vulnerable
adults and children with
transport each day



94 Hackney Carriage Licenses,
758 private hire vehicle licenses issued
1,576 licensed vehicle inspections
40 Private Hire Operators



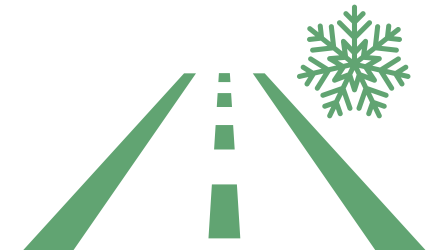
Maintain and operate a fleet of over
over **300** vehicles and items of plant



Supported over **1,800**
residents to claim **£6.1**
million in benefits
92% success rate at benefit
appeals



Almost **2,800** supported
through Welfare Rights
Supported **849** welfare cases
requiring in-depth work or
representation



350km
of carriageways gritted during
winter
400 public grit bins
264km of Public Rights
of Way maintained (public
pootpaths)

EXAMPLES OF SERVICES PROVIDED IN A TYPICAL YEAR

2026
2027



Commission care for
927 people
in residential or
nursing homes



Acted as parent to
627 children in our care



Contacted
**2,343 mothers of
new-born babies**
for health support at six to eight
weeks



Supported
1,707 households
assessed as needing support with
homelessness (prevention or relief)



Supported over
2,300 people
to live independently and
remain in their own homes



138 people
supported to move from
emergency accommodation or
the streets to a safe home



191 rough sleepers
supported, including through
emergency accommodation with
A Bed Every Night