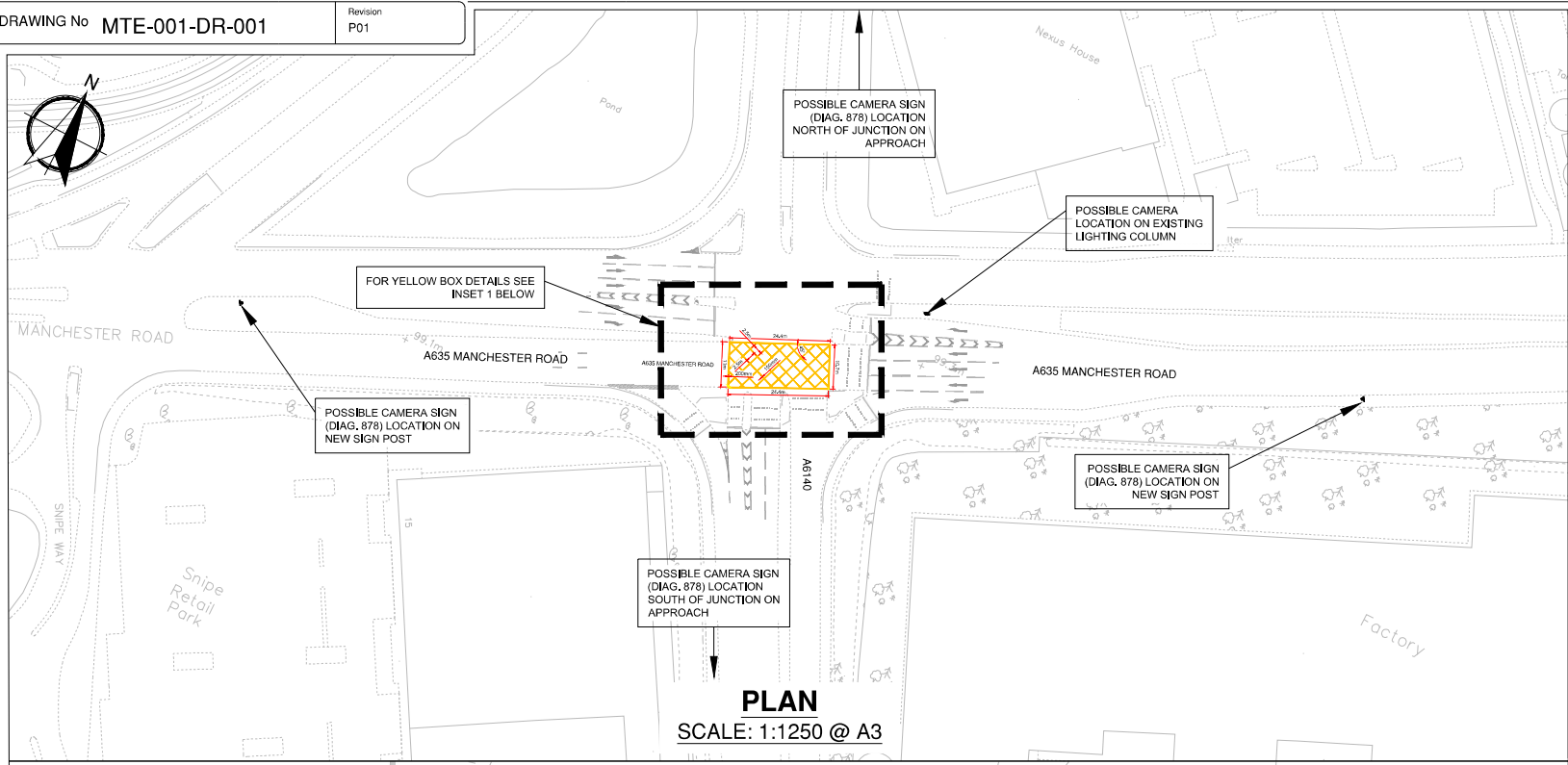


APPENDIX 2

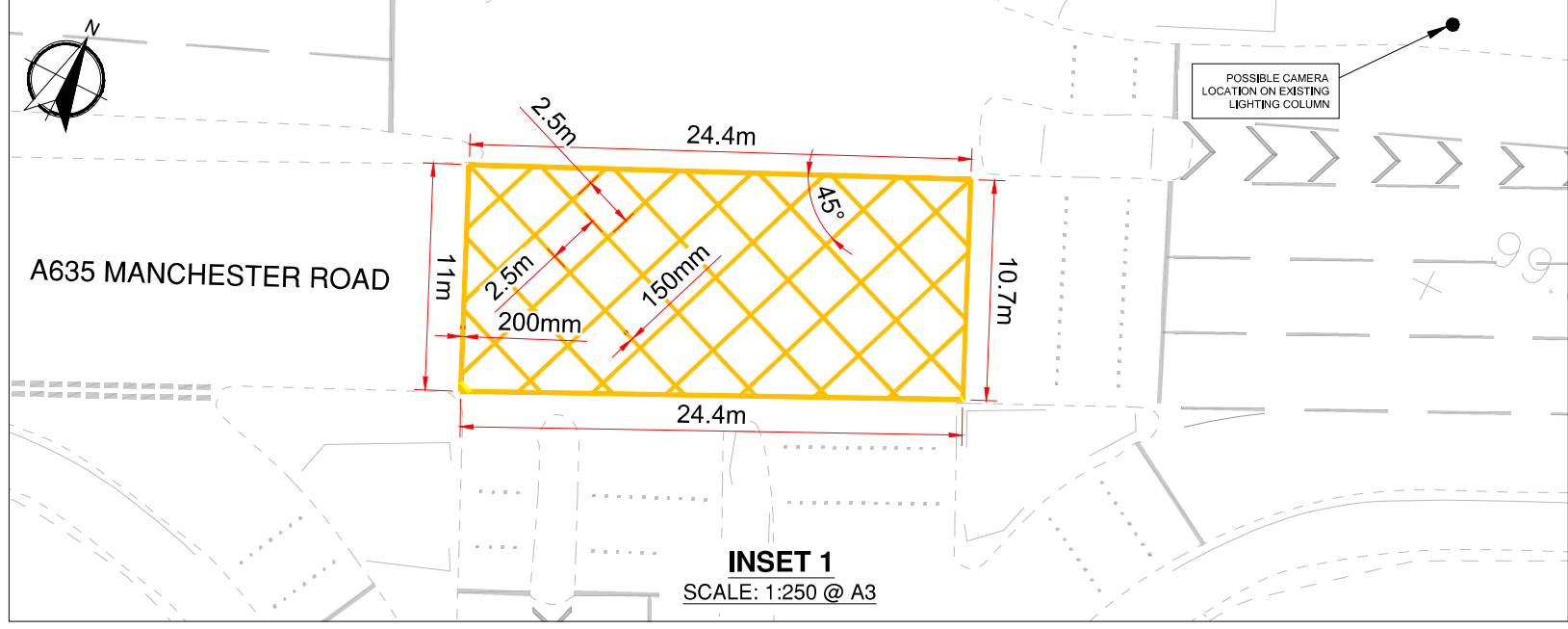


- KEY:**
- PROPOSED YELLOW BOX MARKING
 - EXTERNAL BOUNDARY WALL - 200mm WIDE
 - INTERNAL SPACING OF PARALLEL LINES - 2.5m
 - WIDTH OF INTERNAL LINES - 150mm
 - EXISTING ROAD MARKINGS TO REMAIN

PROPOSED SIGN DETAILS:



Scheme Ref.	MOVING TRAFFIC ENFORCEMENT		
Sign Ref.	878	x=height	TBC
TSRGD Ref.	S20-2-	SIGN FACE	TBC
Letter colour	N/A	Width	TBC
Background	WHITE	Height	TBC
Border	BLACK	Area	TBC
Mount Height			
Material	Class R2		



Ref.	Date	Details	Initials
P01	17.06.25	First Issue	NU
Revisions			

Place Directorate
Assistant Executive Director: Emma Varnam
Head of Engineering Services: Lee Holland

Tame Street Depot; Tame Street;
Stalybridge SK15 1ST

Title
**MOVING TRAFFIC ENFORCEMENT
A635 MANCHESTER ROAD/A6140
ASHTON-UNDER-LYNE
YELLOW BOX JUNCTION DETAIL**

Scale	Drawn	Checked	Scheme ID
AS SHOWN	N. Uys	D. Parsons	MTE
	Date	Date	Drawing Status
	16/06/2025	17/06/2025	P