

Home Learning resources

Access good quality resources and information here:

BBC Tiny Happy People

Children's language development and parenting advice
www.bbc.co.uk/tiny-happy-people

Hungry Little Minds

Chat, play, read | National Literacy Trust
literacytrust.org.uk/communities/north-east/-chat-play-read/

Go to Grow Tameside

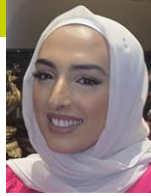
Fun learning activities to do at home – Grow
gotogrowtameside.co.uk
www.gotogrowtameside.co.uk/fun-learning-activities-to-do-at-home/

Grow at home in Tameside - Facebook

www.facebook.com/groups/1095739384728630

Our online platforms have a wealth of information readily available for you to access. This includes information about your child's development, tips for supporting your child at home and links to other useful websites.

Contact us



Aisha Ali
07970688968



Sarah Stradomsky
07973804917

Our e-mail inbox:

homelearning@tameside.gov.uk

Contact Address:

Greenside Family Hub
Greenside Lane, Droyslden M34 7RA
Phone: 0161 342 5197



Tameside Home Learning Service



What is the Home learning Service?

Tameside home learning service provides home visiting support for families with pre-school children. We want to work with parents and families to support their children's development so they are ready to start their school journey, happy, healthy and confident.

We know the importance of the Home Environment for children as a place where they do most of their growing and developing, and that parents and family members are important people in children's lives. What they do, how they interact, play, and participate in meaningful activities with their children has a big impact on their health and wellbeing.

How Can We Help?

Our home learning educators are experienced early years professionals with backgrounds in Family Support. Each family is unique so we will work with you to identify the best package of support for both children and wider family needs, bringing the support to your home or local community.

What might support look like?

This can include:

- Regular home visits, tailored around your child's needs.
- Role modelling activities and sharing Information with you on key age and developmental stages.
- Enriching the home learning environment with the use of toys, books and storybooks which can be left with families to use whilst we are working with you
- Communication and language support by delivery of Small Talk (9-18mths) and Toddler Talk (18-30mths) sessions on a one to one basis.
- Delivery of the Making it REAL programme which supports children's literacy development.
- Support for children with emerging special educational needs
- Supported access to local community venues such as libraries, greenspaces and local family hub groups.
- Access to our online platforms for support-Grow at Home
- Link to wider support where needed such as Early Help services.

Our Tips for supporting children at home

Support your child's development, particularly their speech, language and communication skills by including these activities in your daily life

- Listen to your Children and value their contributions and ideas
- Create opportunities for language and thinking
- Read and Share books daily. Have a range of books out for children to access freely
- Sing songs and nursery rhymes
- Provide resources for messy play and mark making
- Use outdoor space and local community assets such as libraries and parks

