



Local news and events from

Tameside Council

Here for you

#ProudTameside



Exciting times for our

towns this summer

Tameside
Metropolitan Borough

FOLLOW US ON FACEBOOK, INSTAGRAM, LINKEDIN AND X, (TWITTER)

ISSUE 100 | SUMMER 2026

What goes in each bin?



Non recyclable waste



Plastic bags



Dog waste and nappies



Aerosol cans



Plastic bottles



Glass bottles and jars



Aluminium foil



Cans and tins



Plastic food trays & yoghurt pots



You can now recycle plastic pots, tubs and trays



Newspaper and magazines



Paper



Cardboard



Junk mail



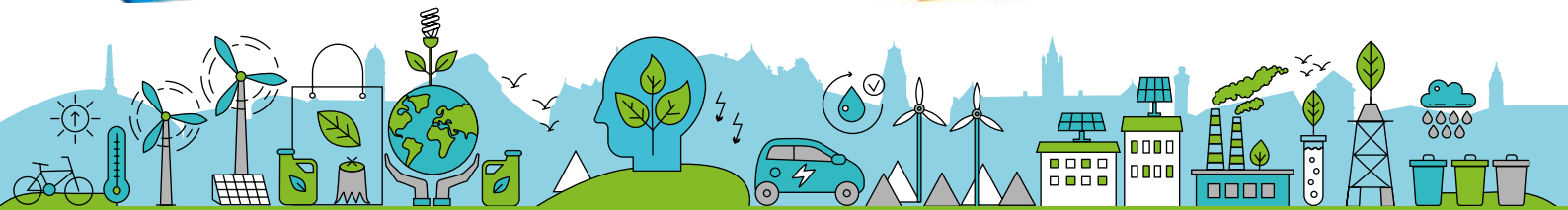
Plants, leaves and small twigs



Grass cuttings



Uncooked and cooked food



tameside.gov.uk/recycling

**BEST
START
IN LIFE**

**FAMILY
HUBS**



- A range of free services and activities for families
- A 'one stop shop' of early support for families and young people within their local communities
- For children and young people, from 0 to 19, or up to 25 with special educational needs and disabilities (SEND)
- Opportunity to join our Parent and Carer Panels

Visit your local Family Hub

North Family Hub

Trafalgar Square,
Ashton-under-Lyne, OL7 0LL
Call: 0161 342 2255

East Family Hub

School Crescent, Ridge Hill,
Stalybridge, SK15 1EA
Call: 0161 342 5533

South Family Hub

Hyde Old Road, Flowery Fields,
Hyde, SK14 4SQ
Call: 0161 342 5353

West Family Hub

Greenside Lane,
Droylsden, M43 7RA
Call: 0161 342 5197

Find out more at:

2

www.tameside.gov.uk/FamilyHubs

Welcome to the summer edition of Here For You

We have some fantastic events lined up across Tameside this summer to help you make the most of the sunshine and scenery. With the transformation programme around Ashton Market Square now almost complete, a host of events will celebrate this rejuvenated civic space and bring people together. You can find all the details on page 4 in this edition of Here For You, alongside entertainment in Stalybridge, including the ever-popular Street Fest, and around the borough, such as the award-winning Mossley Farmer's Market. And our What's On guide on page 23 has even more things for you to see and do.

Our regeneration schemes continue to progress at pace with the latest developments on pages 6 -9, including the latest on our investments across the borough as part of the Pride in Place Impact Fund.

Protecting and improving our environment is a priority, and on page 7 you can read about how our Eco Streets project is continuing to transform neighbourhoods, how one of our primary schools is lighting the

way to energy efficiency and our latest recycling advancements.

And the dedicated work of our Children's Services and Adults' Services are detailed from pages 14 to 17, from more families gaining their first-choice school places than ever before and the success of our ongoing SEND investment, to our reablement service helping someone walk again and the support provided to help those with dementia.

I hope you are able to explore and enjoy everything that's available in Tameside and have a superb summer.



Cllr Eleanor Wills
Tameside Council Executive Leader



P7 Eco Streets project



P15 SEND School Places to Increase

Contents

| | |
|--|-------|
| Ashton & Stalybridge summer events | 4 |
| Street Fest & Mossley Farmers Market | 5 |
| Think Green Eco Streets | 7 |
| Pride in Place | 8-9 |
| Jobs Fair success | 10 |
| Transport countdown | 11 |
| Know Your Councillors | 12-13 |
| Free activities at Family Hubs | 14 |
| Progress for SEND | 15 |
| Reablement team | 16 |
| Tameside Shared Lives | 17 |
| Public protection crackdown | 18 |
| Domestic abuse support | 19 |
| Success after quitting smoking | 20 |
| Proud Tameside | 21 |
| Fostering & Adoption | 22 |
| What's On | 23 |
| Cost of living support | 24 |

What's on in Stalybridge: culture, fun & fantastic events

Stalybridge is stepping into the spotlight with a bold, feel-good programme of events that brings the very best of culture, creativity, and community to the heart of Victoria Market Hall. From summer festivals to festive favourites and high-energy experiences in between, this jam-packed calendar is designed to surprise, delight and keep you coming back for more.

Expect big laughs, live music, family adventures, and immersive experiences all under one roof. Whether you're soaking up seaside vibes at a pop-up beach, enjoying candlelit concerts, browsing artisan markets, or dancing the day away at a daytime disco, there's always something exciting happening.

Families can dive into hands-on creative activities, theatre, and seasonal celebrations, while music lovers can explore everything from emerging local talent to West End hits and genre-blending performances. Seasonal highlights, from cosy winter weekends to vibrant spring spectacles, ensure there's something to look forward to all year round.

Best of all, many events are free or low-cost, making it easy for everyone to get involved and make memories together.

So, whether you're planning a night out, a family day, or something a little different, Stalybridge is your go-to destination.

Book your tickets now at www.intameside.co.uk/stalybridge

Ashton is gearing up for a **spectacular summer**

Ashton is also set to be bursting with energy, as the transformed market square opens it will offer a vibrant year-round programme of events.

From colourful sculpture trails and lively family festivals to big-screen sporting moments and unforgettable seasonal celebrations, Ashton will bring people together through culture, creativity, and shared experiences.

The preview events in the Spring have given just a small taste of what's to come.

Everyone will be able to enjoy free activities, live performances, artisan markets, and themed Super Saturday events that showcase local talent and community spirit.

Whether you're with family, meeting friends, shopping or discovering something new, Ashton will provide a new welcoming and exciting destination where there's always something happening to entertain, inspire and create lasting memories.

Thank you to everyone for supporting the town and supporting the many fantastic local traders. Don't forget you can park for free for two hours in all Tameside Council run car parks Monday to Saturday before 6pm. Just remember to still display your free ticket!

Find out more at www.intameside.co.uk/ashton

STALYBRIDGE STREET FEST

Stalybridge Street Fest is back and better than ever

The popular Stalybridge Street Fest is back in full swing for its fifth year.

Every month, hundreds of residents head to Armentieres Square, Stalybridge, for delicious food, live entertainment, and family friendly fun. The popular event, which runs on the second Friday of every month 5-9pm, guarantee to bring a packed agenda of entertainment including local talent, live music and activities for all ages. There is also a fantastic array of food and drink traders on offer, with cuisines from around the world. The Artisan Market in Victoria Market Hall, runs at the same time as Street Fest with stalls offering lots of unique products and homemade treats. www.intameside.co.uk/news/stalybridgestreetfest



Building on successful first year

MOSSLEY Farmers MARKET

Sunday 28 June • Sunday 26 July • Sunday 30 August
Sunday 27 September • Sunday 25 October
Sunday 29 November

Last Sunday of the month
10am until 2.30pm



After an incredibly successful debut year, the award-winning Mossley Farmers' Market has returned for 2026.

The event, organised by Tameside Council, has stalls provided by Little Owl Artisan and independent traders, where visitors can browse a range of locally sourced products.

It takes place on the final Sunday of every month in Market St Car Park, from 9am to 2pm.

The market, which will run up to November, also features a range of family friendly entertainment. The 2025 market series grew significantly in popularity, increasing from 10 stalls at the first event to 40 stalls by the final one, and won the 'Best Small Speciality Market' at the Great British Market Awards.



Local Studies and Archive Centre recognised for high standards



Tameside's Local Studies and Archive Centre

Tameside's Local Studies and Archive Centre has once again been recognised for its high standards, retaining its accredited status for the seventh consecutive year.

Tameside Council's centre has met the agreed UK standards for archive services on its policies, processes and engagements. As a result, it can remain a place of deposit for documents such as council and court records. This achievement reflects the hard work and passion of both Tameside Council staff and local volunteers, who have contributed more than 1,000 hours over the past year.

The centre preserves the records of Tameside Council and its predecessors, as well as archives and photographs from private donors, depositors and organisations. The team can help with searches for local and family history, cleaning archives, and much more. To find out more visit www.tameside.gov.uk/archives or call 0161 3424242.

Stamford Park welcomed thousands for popular



Around 5,000 people enjoyed free family fun in the sunshine at Stamford Park's Spring Family Fun Day.

Families from across the borough and beyond gathered to enjoy a packed programme of activities and entertainment.

The event, organised by Tameside Council's Operations and Greenspace team, featured walkabout performers, free face painting and crafts, birds of prey, a climbing wall, inflatables and an RSPCA dog show.

Community stalls from local organisations and council services were on site to offer local support and advice.



A young girl has fun with a bow and arrow during Stamford Park's Spring Family Fun Day.

Family festival fun previews exciting times for our towns

Tameside's Spring Family Festival gave a tantalising taste of what's to come for Ashton and Stalybridge town centres.

The four day family event – which included vintage fairground rides, carnival, theatre, dance and music performances, free face painting, balloon modelling and arts and crafts, and street food stalls – drew huge crowds and provided families with free entertainment during the school Easter holidays while also showcasing ongoing transformational work in the towns and giving a preview of the upcoming cultural programme.

This is just the start of our transformational plans for all of our town centres to help them meet the needs of residents, visitors and businesses and move with current shopping, leisure and cultural trends.

There's free parking for up to two hours in all Tameside Council run car parks before 6pm Monday to Saturday, making it even easier for people to visit our town centres, support local businesses and enjoy local events and amenities. For further details on upcoming events and cultural activities see www.intameside.co.uk





Eco Streets project continues to transform neighbourhoods

The Eco Streets initiative in Tameside has brought residents together to transform neglected alleyways into vibrant, community-led green spaces.

Through a partnership between Tameside Council Community Safety and Groundwork Greater Manchester, the projects have centred on empowering residents to shape the design, development, and long-term stewardship of their shared outdoor spaces. The scheme aims to build long-term pride in the area and encourage residents to maintain and enjoy the improvements. It has already begun strengthening neighbourly connections.

In Ashton, residents living near Whiteacre Road were invited to a series of pop-up engagement activities where they could share ideas and influence the design of improvements to their alleyway. These sessions included practical educational workshops such as potting and planting seeds, alongside creative activities like designing

mosaic back door number tiles and contributing to a community mural. Ongoing consultation ensured that residents' voices guided every stage of the process.

In Hyde, a similar Eco Streets project has revitalised the alleyway behind Syddall Street. Groundwork Greater Manchester worked closely with residents to reimagine the space, ensuring the design reflected the needs of the whole community. Surveys and pop-up workshops gave everyone the chance to contribute, while Hyde Bangladeshi Welfare provided interpretation support to ensure non English speaking residents were fully included.

Together, these Eco Streets projects demonstrate how community-focused design, learning, and creative collaboration can transform run-down spaces into places of pride, connection, and shared ownership.

To find out more about environmental campaigns visit www.tameside.gov.uk/ourstreets



Tameside Primary School lights the way to energy efficiency

Solar panels are to be installed at the Heys Primary School in Ashton to generate energy, save on running costs and help the environment.

Tameside Council has accepted a grant for the scheme from The Department of Education, who have selected The Heys Primary as one of the schools to receive solar panels. The project will deliver significant long-term energy savings. The estimated value of savings is much higher than the cost, so is expected to deliver value for money. Tameside College and Oasis Academy Broadoak have also installed solar panels to help with energy efficiency. The environmental benefits contribute to Tameside's aims of being carbon neutral by 2038.

Rinse it. Bin it. Recycled!

Bin trucks are helping to drive home the message to rinse and recycle your plastic pots, tubs and trays.

Tameside Council started accepting plastic pots, tub and trays in the mixed recycling black bin in 2024. To help raise further awareness, Recycle for Greater Manchester (R4GM) and the council are now highlighting the message on two bin trucks. Plastic pots, tubs and trays are recycled alongside plastic bottles, aerosols, foil, foil trays, drink cans, food tins, glass bottles and jars in the black mixed recycling bin.

Please rinse out your recycling as items that are covered in food are less likely to be recycled and food also damages the sorting equipment.

For more information see www.tameside.gov.uk/recycling



Bin trucks drive home recycling message



Ashton's future taking shape, together

Exciting changes are continuing across Ashton town centre, with investment helping to create a place that works better for local people, businesses and visitors alike.

One of the biggest recent steps forward is Tameside Council's purchase of the Ladysmith Shopping Centre in May 2026. Bringing this key site into public ownership means the council can shape its future in a way that benefits the community. Over time, plans could see a mix of shops, leisure spaces and new homes, designed to bring more life into the town centre throughout the week.

You may already have seen changes happening around Market Square. Work is nearing completion to create a more welcoming space with a covered market, new seating, lighting and areas for events. The aim is to give traders better facilities while creating a lively, flexible space where people can meet, shop and take part in community activities all year round.

At the heart of Ashton, plans are also progressing to bring the historic town hall back into use. This much loved building has been closed for several years, but proposals are moving forward to restore it and open it up once again. Early ideas include spaces for community events, culture and heritage, alongside places to relax like cafés or a restaurant.

The long-term ambition is for the town hall to reopen later this decade as a welcoming space for everyone.

All of these improvements are part of a wider plan to create a town centre that reflects local pride, celebrates Ashton's heritage, and provides new opportunities for residents. As work continues, local feedback will remain important in shaping a town we can all feel proud to call our own.

Find out more www.tameside.gov.uk/ashtontowncentre

Stalybridge Investment

Stalybridge is also benefiting from major investment through the Government's Capital Regeneration funding, with work now underway across the town. Improvements to Market Street and surrounding areas are creating safer, more attractive spaces, while Armentieres Square is being transformed into a more welcoming hub for community events with new improved paving, lighting and electrics.

Key cultural projects are also progressing, including restoration of the Astley Cheetham Art Gallery, where work has begun on a new accessible entrance with a lift and ramp to improve access for all.

Together, these projects are helping to create vibrant spaces, support local businesses, and bring people together to enjoy Stalybridge. Find out the latest updates at www.tameside.gov.uk/stalybridgeregeneration

Denton Town Centre work underway

Work is underway to transform Denton Town Centre into a greener, safer, and more vibrant place. Backed by major investment, the plans focus on improving public spaces and making it easier for people to get around. New trees and planting are being introduced, alongside upgrades to key areas like Manchester Road, Market Street, and Civic Square.

Over 1km of improved walking and cycling routes will help connect the town, while safer crossings and wider pavements will put pedestrians first. New seating areas, pocket parks, and better signage will also make the centre more welcoming.

Find out more www.tameside.gov.uk/destinationdenton

Godley Green Garden Village



Godley Green Garden Village has taken a major step forward following approval of revised plans. The scheme will deliver up to 2,150 homes, a new primary school, parks, and green spaces giving local families more housing choice and access to places to relax, play, and stay active.

A planning application for early infrastructure, including roads and landscaping, has now been submitted to prepare the site for future homes.

Backed by £17.4m from the GM Good Growth Fund, the project will help create local jobs, improve infrastructure, and support a well-connected, welcoming community for both new and existing residents.

PRIDE IN PLACE

LED BY YOU – BACKED BY UK GOVERNMENT

Community leads plans to improve Ashton

Exciting plans are being developed to make Ashton a better place to live, work and spend time and they are being shaped by local people, using funding from the Government's Pride in Place programme.

This funding has been secured specifically for Ashton and is being used to support a range of projects that respond directly to what residents, businesses and community groups have said they want to see improved.

One of the biggest priorities identified by the community is safety. In response, the funding will support a new evening and night-time security team in the town centre, helping tackle anti-social behaviour and making people feel safer after dark.

Local people also said they want Ashton to feel cleaner, greener and more welcoming. Funding will therefore be used to maintain places like Market Square, improve landscaping, and ensure public spaces stay attractive and well cared for.

Young people and residents will play a key role in shaping their surroundings too. A community art project will see young people help redesign local subways, turning them into brighter, safer spaces that reflect community pride.

The money will also support a wide range of community-led activities. New events, festivals and a local grants scheme will give organisations the chance to run activities that bring people together, reduce loneliness and celebrate Ashton's diverse communities.

Investment isn't just about events; it's about long-term improvements too. Pride in Place funding will help upgrade parks, sports facilities and community centres, making it easier for people to stay active, social and healthy.

Major town centre projects are also included. Ashton Market Hall will be transformed into a modern space for food, creativity and culture, while a new adult support hub will provide advice, skills support and essential services all in one place.

Finally, the funding will help create new opportunities for residents, including support for training, education and starting a business.

Together, these projects show how Pride in Place funding is being used to invest in Ashton's future, creating a safer, greener and more connected town, shaped by the community and designed to benefit everyone. Find out more about the Ashton Pride in Place programme at www.tameside.gov.uk/ashtonprideinplace

Former Hyde Library plans moving forward for new homes

Exciting plans are moving ahead to bring the former Hyde Library back to life after its sale to Hyde Court Ltd. The long-empty building will be transformed into 102 modern homes, with its historic front carefully preserved. New apartments will also be built on the site, creating a vibrant place to live in the heart of Hyde.

After years of decline, this landmark building is finally set for a fresh future. The development is a key part of wider plans to revitalise the town centre, helping attract new investment, boost local pride, and bring new energy back to Hyde.

Hattersley Get involved

Hattersley is also starting an exciting new chapter with £20 million investment through Pride in Place. Over the next 10 years, local people will have a real say in what happens next. A new community board is being set up, and residents can get involved to help shape ideas and decisions. You don't need experience, just passion for your area and a desire to make a difference. It's a chance to speak up, be heard and help improve places that matter to you.

Join the journey and play a part in building a brighter future for Hattersley. Get in touch with the team at hattersleypipp@tameside.gov.uk or find out more at www.tameside.gov.uk/hattersleyprideinplace

PRIDE IN PLACE

LED BY YOU – BACKED BY UK GOVERNMENT

TAMESIDE JOBS FAIR

Hundreds of Tameside residents access new opportunities at Spring Jobs Fair



A range of stalls were available for visitors to browse and chat with employers.



Tameside Council's Environmental Services team offered career opportunities at the fair.

Over 700 residents attended Tameside's Spring Jobs Fair to meet employers face-to-face and discover new careers.

Organised by Tameside Council's Employment and Skills team, the Jobs Fair was held at Dukinfield Town Hall and showcased a wide range of employers, training providers, and support services across three halls.

Attendees of all ages were able to chat with and learn more about employers from a variety of sectors across

the borough, apply to jobs live on the day, and find new opportunities they may not have known about previously.

There were also training, support, and skills providers on hand to help people with their employment journey. Residents could access CV advice, job application guidance, and interview support.

The free, drop-in event provided benefits for both attendees and employers, linking local talent with available roles. Those running stalls included Greater Manchester Fire and Rescue Service, Tameside Music Service, Hyde Group, Smart Works, The Job Gym, local colleges, and many of Tameside Council's teams.

Potential vacancies and upskilling opportunities covered both full-time and part-time roles. This included the in-work progression support provided by 'Tameside In Work' and the supported employment service 'Routes to Work'.

Visitors to the fair shared plenty of positive feedback, including that it had "lots of variety", was "very well organised" and had "kind and informative" staff.

The Jobs Fair is held twice a year and will return in Autumn, offering more chances for employers and jobseekers to connect.

For support in the meantime, email employmentandskills@tameside.gov.uk or call 0161 342 3111.

£18.5million investment to support residents with Council Tax

Tameside Council is strengthening its support for financially vulnerable households by investing £18.5million into the Council Tax Support Scheme for 2026/27.

The revised scheme introduced last year continues to work well and will remain in place for the coming year. It provides vital help to low-income households and those most at risk of financial hardship, while also reducing overall administration and making the process more straightforward for residents.

Residents who are struggling to pay their Council Tax should contact the Council's Benefits Team for help and support by either emailing benefits@tameside.gov.uk, calling 0161 342 3708 or visiting www.tameside.gov.uk/benefits.



The prestigious Pride of Tameside Business Awards return in 2026, championing the passion, innovation and resilience of businesses across the borough, celebrating everyone from ambitious start-ups and independent traders to thriving, established organisations.

Nominations will open in the coming weeks, with this year's award categories soon to be revealed. This is a chance

for businesses of every size to step forward and share their story.

The awards ceremony will take place in October 2026, a night dedicated to recognising excellence, inspiring ambition, and shining a spotlight on the very best of local business.

Keep an eye out for updates on how to submit nominations and be part of this celebration. Find out more at prideoftamesideawards.co.uk



Countdown is on for **Tameside's transport improvements**

With less than six months to go, big improvements to local transport are on the way for Tameside residents. From December 2026, rail services will begin joining Greater Manchester's Bee Network, helping create a simpler, more joined-up way to travel.

The Bee Network will bring together buses, trams, and trains, making daily journeys easier and more reliable. The first rail lines to be included will run through Ashton-under-Lyne and Stalybridge, with contactless "tap in, tap out" ticketing introduced across the network. Daily and weekly fare caps will help people manage costs and make travel more affordable.

For families, this means simpler trips, whether it's the school run, visiting friends, or days out across Greater Manchester. Better connections and clearer travel information will make journeys less stressful, while improved accessibility at stations will help more people travel with confidence.

Local businesses will also feel the benefits. Easier, more reliable travel is expected to bring more visitors into town centres like Ashton and Stalybridge, boosting footfall for shops, cafés, and services. At the same time, improved transport links will help employees get to work more easily, supporting recruitment and helping businesses grow. With people spending less on travel, there may also be more to spend locally, supporting the wider economy.

Stations across Tameside will see upgrades, including Bee Network branding and clearer signage, helping to create welcoming gateways to our towns. These changes build on improvements already made to bus services and form part of a wider plan for a fully integrated transport system.

By 2028, most Tameside stations will be part of the Bee Network, making travel across the region simpler, fairer, and more convenient for residents, families, and businesses alike.

Find out more about the Bee Network at [tfgm.com](https://www.tfgm.com)

Support for your business

Tameside Means Business is a dedicated support service for anyone looking to start or grow a business in the borough. It offers expert advice, tailored workshops and valuable networking opportunities, helping local entrepreneurs develop skills and connections.

Whether launching a start-up or expanding, businesses can access practical guidance at every stage, from marketing

**TAMESIDE
MEANS BUSINESS**

to innovation. In addition, the Pride of Tameside Business Awards celebrate the achievements of local business, recognising success, innovation and community impact while inspiring others to thrive within Tameside's vibrant business community.

Find out more and get in touch with the team today at tamesidemeansbusiness@tameside.gov.uk

WORKWELL TAMESIDE

Help for your next steps

WorkWell Tameside is here to support local residents with their next steps in life.

Whether you're thinking about your first job, don't know where to start, or want help getting back into work, friendly advisors are ready to help. They can support you with confidence, wellbeing, job searches, and building new skills.

You can also visit local drop-in sessions to meet the team, ask questions, and get advice in a relaxed, welcoming space. WorkWell Tameside is here to help you move forward and feel more confident about your future.

Call 0161 342 3111 or find out more at www.tameside.gov.uk/workwell

Ashton Hurst



Councillor Mike Glover

80 Hall Road
Ashton-under-Lyne
OL6 8QB

Tel: 07973 718002



Councillor Mohammed Karim

Tameside One
Market Place
Ashton-under-Lyne
OL6 6BH

Tel: 07908 435477



Councillor Keiron Lawrence

Tameside One
Market Place
Ashton-under-Lyne
OL6 6BH

Tel: 07562 548276

Ashton St. Michael's



Councillor Andrew McLaren

Tameside One
Market Place
Ashton-under-Lyne
OL6 6BH

Tel: 07957 562220



Councillor Jean Drennan

75 Avonlea Road
Droylsden
M43 6WE

Tel: 07340 332117



Councillor Danny Carr

Tameside One
Market Place
Ashton-under-Lyne
OL6 6BH

Tel: 342 2105

Ashton Waterloo



Councillor Vimal Choksi MBE

16 Spring Clough
Ashton-under-Lyne
OL7 9TJ

Tel: 07877 748207



Councillor Sangita Patel

Tameside One
Market Place
Ashton-under-Lyne
OL6 6BH

Tel: 07807 002076



Councillor Raymond Dunning

Tameside One
Market Place
Ashton-under-Lyne
OL6 6BH

Tel: 342 2105

Denton West



Councillor George Jones

Tameside One
Market Place
Ashton-under-Lyne
OL6 6BH

Tel: 07847 535028



Councillor Michael Smith

Tameside One
Market Place
Ashton-under-Lyne
OL6 6BH

Tel: 371 0765



Councillor Dan Bennett

Tameside One
Market Place
Ashton-under-Lyne
OL6 6BH

Tel: 342 2105

Droylsden East



Councillor David Mills

75 High Bank Road
Droylsden
M43 6FS

Tel: 07925 743301



Councillor Laura Boyle

Tameside One
Market Place
Ashton-under-Lyne
OL6 6BH

Tel: 07588 628587



Councillor Caroline England

Tameside One
Market Place
Ashton-under-Lyne
OL6 6BH

Tel: 07413 406 389

Droylsden West



Councillor Ged Cooney

5 Hart Avenue
Droylsden
M43 7EJ

Tel: 759 2519



Councillor Barrie Holland

47 Shelley Grove
Droylsden
M43 7YF

Tel: 370 2481



Councillor Sharon Barker

Tameside One
Market Place
Ashton-under-Lyne
OL6 6BH

Tel: 342 2105

Hyde Newton



Councillor Helen Bowden

120 Clarendon Road
Hyde
SK14 2LJ

Tel: 07745 295246



Councillor Hugh Roderick

Tameside One
Market Place
Ashton-under-Lyne
OL6 6BH

Tel: 07934 916305



Councillor Sam Mooney

Tameside One
Market Place
Ashton-under-Lyne
OL6 6BH

Tel: 342 2105

Hyde Werneth



Councillor Phil Chadwick

75 Woodfield Avenue
Hyde
SK14 5BA

Tel: 07368 835008



Councillor Chris Halligan

Tameside One
Market Place
Ashton-under-Lyne
OL6 6BH

Tel: 07858 884 282



Councillor Christopher Stones

Tameside One
Market Place
Ashton-under-Lyne
OL6 6BH

Tel: 07956 365247

Longdendale



Councillor Allan Hopwood

Miniature Castle
Farm,
Matley, Hyde,
SK14 3AR

Tel: 07860 917023



Councillor Jacqueline Owen

Tameside One
Market Place
Ashton-under-Lyne
OL6 6BH

Tel: 07891 138943



Councillor Greg McNally

Tameside One
Market Place
Ashton-under-Lyne
OL6 6BH

Tel: 07709 939327

St. Peter's



Councillor Joyce Bowerman

8 Marlborough Close
Ashton-under-Lyne
OL7 0HT

Tel: 339 0954



Councillor Kaleel Khan

Tameside One
Market Place
Ashton-under-Lyne
OL6 6BH

Tel: 0161 342 2105



Councillor Atta Ul-Rasool

Tameside One
Market Place
Ashton-under-Lyne
OL6 6BH

Tel: 342 2105

Stalybridge North



Councillor Christine Beardmore

110 Stocks Lane
Stalybridge
SK15 2TQ

Tel: 07483 254182



Councillor Steven Barton

Tameside One
Market Place
Ashton-under-Lyne
OL6 6BH

Tel: 07961911964



Councillor Liam Duff

Tameside One
Market Place
Ashton-under-Lyne
OL6 6BH

Tel: 07950 197912

Stalybridge South



Councillor Doreen Dickinson

106 Stocks Lane
Stalybridge
SK15 2TQ

Tel: 07964 338646



Councillor David Tilbrook

Tameside One
Market Place
Ashton-under-Lyne
OL6 6BH

Tel: 07354 921714



Councillor Jenny Ardron-Adams

Tameside One
Market Place
Ashton-under-Lyne
OL6 6BH

Tel: 07463 922524

www.tameside.gov.uk/councillors

rs 2026 - 2027

Audenshaw



Councillor Charlotte Martin
Tameside One Market Place
Ashton-under-Lyne OL6 6BH
Tel: 07971 525383



Councillor Teresa Smith
Tameside One Market Place
Ashton-under-Lyne OL6 6BH
Tel: 342 4297



Councillor Kim Roberts
Tameside One Market Place
Ashton-under-Lyne OL6 6BH
Tel: 07862 741726

Denton North East



Councillor Allison Gwynne
Tameside One Market Place
Ashton-under-Lyne OL6 6BH
Tel: 342 2105



Councillor Vincent Ricci
Tameside One Market Place
Ashton-under-Lyne OL6 6BH
Tel: 223 0395



Councillor Aron Webb
Tameside One Market Place
Ashton-under-Lyne OL6 6BH
Tel: 342 2105

Denton South



Councillor George Newton
Tameside One Market Place
Ashton-under-Lyne OL6 6BH
Tel: 07810 640151



Councillor Jack Naylor
Tameside One Market Place
Ashton-under-Lyne OL6 6BH
Tel: 07772 382548



Councillor Audra Murray
Tameside One Market Place
Ashton-under-Lyne OL6 6BH
Tel: 07505 236785

Dukinfield



Councillor Jacqueline Lane
Tameside One Market Place
Ashton-under-Lyne OL6 6BH
Tel: 320 0616



Councillor Naila Sharif
Tameside One Market Place
Ashton-under-Lyne OL6 6BH
Tel: 07858 441569



Councillor James Rhodes
Tameside One Market Place
Ashton-under-Lyne OL6 6BH
Tel: 342 2105

Dukinfield/Stalybridge



Councillor Leanne Feeley
Tameside One Market Place
Ashton-under-Lyne OL6 6BH
Tel: 07815 886763



Councillor Eleanor Wills
Tameside One Market Place
Ashton-under-Lyne OL6 6BH
Tel: 342 3016



Councillor Jake Frater
Tameside One Market Place
Ashton-under-Lyne OL6 6BH
Tel: 342 2105

Hyde Godley



Councillor Joe Kitchen
Tameside One Market Place
Ashton-under-Lyne OL6 6BH
Tel: 07970 467285



Councillor Andrea Colbourne
26 Oaklands Road
Hyde SK14 3DD
Tel: 07971 541651



Councillor Mark Beese
Tameside One Market Place
Ashton-under-Lyne OL6 6BH
Tel: 07565 727896

Mossley



Councillor Jack Homer
Tameside One Market Place
Ashton-under-Lyne OL6 6BH
Tel: 07773 044769



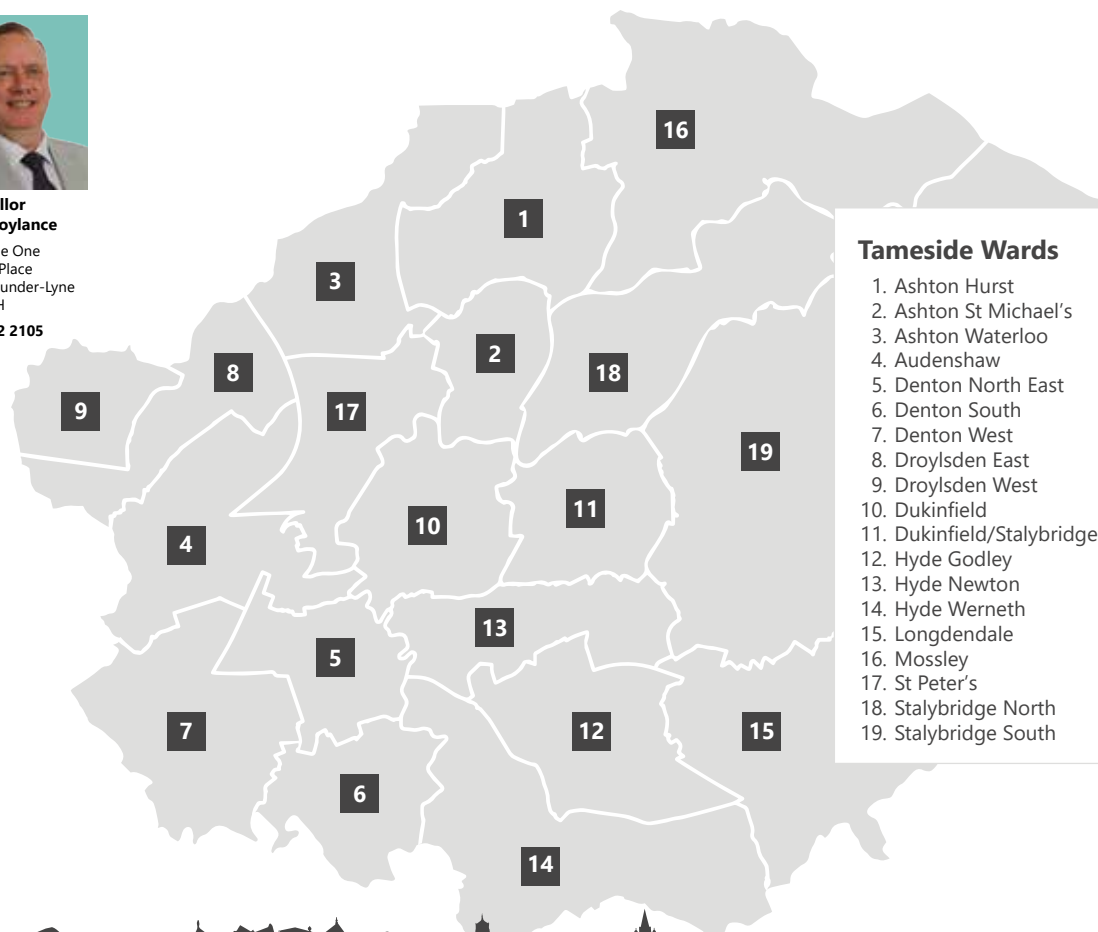
Councillor Stephen Homer
Tameside One Market Place
Ashton-under-Lyne OL6 6BH
Tel: 07562 438820



Councillor Gary Roylance
Tameside One Market Place
Ashton-under-Lyne OL6 6BH
Tel: 342 2105

Number of Seats:

- Labour**
24 seats
- Reform UK**
19 seats
- Conservative**
5 seats
- Independent**
5 seats
- Independent Group**
4 seats



Tameside Wards

1. Ashton Hurst
2. Ashton St Michael's
3. Ashton Waterloo
4. Audenshaw
5. Denton North East
6. Denton South
7. Denton West
8. Droylsden East
9. Droylsden West
10. Dukinfield
11. Dukinfield/Stalybridge
12. Hyde Godley
13. Hyde Newton
14. Hyde Werneth
15. Longdendale
16. Mossley
17. St Peter's
18. Stalybridge North
19. Stalybridge South



Families across Tameside can look forward to the September term with record numbers of children getting into the schools they hoped for this year.

For children starting primary school in September 2026, more than 95 per cent of families were given their first-choice school. This is the second year in a row it has happened, and it is higher than the average over the last ten years. When second choices are included, around 98 per cent of families got one of their top two schools. In total, 2,548 places have been offered at primary schools across the borough.

More families gain first choice primary and secondary schools

There is also good news for children moving up to secondary school. Nearly 88 per cent of families were offered their first-choice secondary school, which is the highest level in ten years. When second choices are included, almost 95 per cent of families received one of the schools they preferred. Across Tameside, 3,199 Year 7 places have been given out at 16 secondary schools.

Families applied for these school places last year, choosing their preferred schools in order. They have now been told which school their child will attend, giving them time to prepare for the start of the new school year in September. These positive results are helping to ensure children in Tameside will be going to a school their family feels happy with and as close to home as possible.

If you would like to learn more about schools and education in Tameside, visit www.tameside.gov.uk/Education

Free Activities at Family Hubs



Are you looking for free activities for your little ones where they can play, learn and make friends?

Tameside's Family Hubs are just the place! From baby groups and stay-and-play sessions to parenting support and health advice, there is something for every age and stage. And sessions are still running during school holidays to keep children active, engaged and socialising. Plus, our friendly staff are on hand to provide advice and connect families to local services. Whether you are looking to meet others, build skills or enjoy quality time together, Tameside's Family Hubs provide welcoming spaces for families in community.

Find out more about Family Hubs and the nearest one to you at www.tameside.gov.uk/FamilyHubs

Free clothing to Tameside's care-experienced young people

Care-experienced young people aged 16-21 can access a variety of free, good-quality clothing through Cat's Wardrobe. The Tameside Council initiative also provides volunteering opportunities to support them in employment experience.

It was originally launched as the Wardrobe Project and has been renamed in honour of Cat, a passionate advocate for care-experienced young people who played a key role in launching and promoting the project.

To access Cat's Wardrobe, based at Ashton Old Library, young people should speak with their personal advisor from the Leaving Care Team or social worker.

Donations can be dropped off at the People Place (Ashton Library, OL6 6BH) every first Tuesday of the month from 2pm to 4pm.



Young people look through donations at Cat's Wardrobe.



Families see real progress for children with SEND



A child at St James Church of England Primary School, in Ashton, enjoying one of the many activities they have in the SEND Units.

Tameside's resource bases are strengthening, with schools across the borough seeing real, noticeable improvements for children with Special Educational Needs and Disabilities (SEND).

Over the past year, the council has invested in creating more high-quality SEND places within local schools. This includes £1.5 million to open 133 new places for 2024-25, with a further £5.3 million planned to expand provision again ready for September 2026. This means more children can get the specialist support they need, closer to home, in schools that already know their communities well.

Schools are reporting that the difference this investment is making is already clear. Families say that the support in resource bases feels far more personalised, and communication between home and school has strengthened. Staff in these settings put relationships first, take time to understand each child's needs, and work closely with parents.

Greenfield Academy, in Hyde is just one example of this positive change. Their newly opened SEND Unit has had great feedback from parents, with several noticing improvements in their child's confidence and progress within the first week. Parents spoke about how approachable the staff are, how quickly children settle, and how the school creates calm, sensory-friendly spaces that help pupils feel safe and ready to learn.

Other schools, like St James Church of England Primary School, in Ashton, have also seen real growth in what their resource bases can offer. With a focus on communication support, personalised planning, and full inclusion in everyday school life, staff at St James have been working hard to make sure every lesson is accessible. Their recent work with speech and language specialists and increased enrichment opportunities have helped children thrive both academically and socially.

Across Tameside, resource bases are not just providing specialist support - they're creating environments where children feel understood, valued, and able to make progress at their own pace.

SEND School Places to Increase in Tameside for September Term

Pupils in Tameside will soon benefit from a £5.3 million investment to increase places in time for the September 2026 term. Three new Specialist Resource Provisions (SRPs) and an expansion of a special school will be established as part of mainstream schools, thanks to Tameside Council's High Needs Capital Grant.

Laurus Ryecroft Secondary School in Droylsden, Ashton West End Primary Academy, St Stephen's RC Primary School in Droylsden, and Cromwell High School in Dukinfield will see a total of 118 new places for children and young people with special educational needs and disabilities (SEND) in primary, secondary and post-16 education.

The funding received from the Department for Education (DfE) will provide high-quality, inclusive provision within well-established schools with proven expertise in meeting SEND needs.



Children enjoying a range of tailored activities in the SEND school places.

To keep up to date on news, visit www.tamesidelocaloffer.co.uk



Reablement Team support resident to walk again after lifechanging stroke

Dean from Hyde has been supported by Tameside's Reablement Service after a life-changing stroke, not only changing his life, but his family's lives too.

Returning home from hospital, Dean felt isolated and uncertain, but with short-term support from the service he no longer needs ongoing care.

Reablement is a short-term, free service provided at home, giving people the opportunity to regain lost skills after a spell in hospital or illness.

Dean said: "We've never experienced a situation like this, so after I came home, we had no idea where to start or what support we could get.

"I'm so grateful that Reablement's support workers came in. They were patient and provided personalised ways and equipment to help me, most of it I never even knew existed."

Dean's goal was simple yet challenging: to walk again and climb the stairs independently. Dean and his family have also been signposted to other support, including Tameside Carers Centre, which can support Dean's partner, and

Dean with Reablement support worker Kath



Tameside Council's Community Response Service telecare support for extra peace of mind for himself and his family. Reablement is considered as one of the first steps of support when someone approaches adult social care's Early Support and Advice Hub (ESAH). By working collaboratively, their aim is to keep people living independently and safely in the place they call home.

Find more information on Reablement at www.tameside.gov.uk/adults/reablement or call 0161 922 4888.

Find out more information on the Carers Centre and drop-in support times at www.tameside.gov.uk/carerscentre or call 0161 342 3344.

Find out more about CRS and how they can support you or a loved one at www.tameside.gov.uk/crs or call 0161 342 5100.

New first port of call for support from adult social care



The team behind the Early Support and Advice Hub.

RESIDENTS needing support from adult social care can contact Tameside's Early Support and Advice Hub (ESAH) as their first port of call.

Previously, the Community Gateway coordinated calls for support, but people who feel they need support from adult social care now need to contact ESAH by calling

342 5656. In the past year, the team have supported over 5000 residents to live well in the place they call home.

ESAH take a holistic approach - looking at what matters to each person, helping people navigate their options and find the right care and support at the right time. Their primary aim is to support residents to stay well, independent, and connected to the place they call home and doing the things that matter most to them.

The Community Gateway will continue to operate in its role for Health District Nursing and can be contacted on 0161 922 4888. Find more information about the Community Gateway on the Trust website.

Find out more about social care support for residents over 18 at www.tameside.gov.uk/adults

Do you look after someone? Join Tameside Carers Centre for a brew

Carers Coffee Mornings offers a welcoming space for unpaid carers across the borough to take a well-deserved break, connect with others who understand their experiences, and access practical information and support.

Alongside coffee mornings, the centre hosts a wide range of activities including drop-ins, craft sessions and one-to-one guidance, ensuring carers can find support in ways that suit them.

The Carers Centre continues to help people feel valued, informed and connected. Open to all carers, everyone is welcome. Visit www.tameside.gov.uk/carers or call 0161 342 3344. Carers can also connect on Facebook for regular updates, search 'Tameside Carers Centre.'



Carers enjoying the coffee morning.



DENTON resident Margaret Tovey lives with vascular dementia and is supported by Shared Lives, so she can continue getting out into her community and do the things she loves.

Shared Lives supports people to carry on doing the things that matter to them. The scheme matches people with a carer who has the same passions, interests and hobbies.

Margaret and her husband John Tovey, from Denton, are sharing their story alongside Ausra, their Shared Lives Carer, to encourage others considering this to become a carer.

John realised they needed support after a diagnosis of vascular dementia. John said: "We had no idea what help was out there, we were lost. But we got in touch with Tameside Council and they told us about Shared Lives. It's the best thing that we've ever done."

Margaret was matched with Ausra Meskauskiene, who has now been supporting her since December 2025. The match is part of Live More, a pilot programme in partnership with Greater Manchester Integrated Care

Partnership. This pilot explores how the scheme can support people living with dementia to stay active, well, and connected.

Ausra said: "I love making a positive difference to people's lives. Kindness, listening and sharing time together makes someone feel safe, supported and valued. I'm glad when I see someone smile and appreciate the simple joys."

Margaret added: "I look forward to Monday every week, those three hours with Ausra make such a difference." Both are busy members of their community attending Friends of Victoria Park, they love going to the theatre and both are active members of their local church. The aim is for both the person supported and their families to live well.

During their time together, Margaret and Ausra like to go clothes shopping, go out for walks and stop for a coffee and chat.

John said: "It's really making life that little bit easier; I get a few hours to myself and so does Margaret. Plus, they both enjoy clothes shopping and chatting!"

John has also connected with Tameside Carers Centre to support him. Wellbeing Advisors make sure he's aware and accessing all the support available and help with filling in forms.

Find out more about Shared Lives in Tameside and about how to become a Shared Lives Carer at www.tameside.gov.uk/sharedlives

Find out more about Live More: <https://sharedlivesplus.org.uk/our-work/shared-lives-programmes/live-more-growing-shared-lives-for-people-living-with-dementia-and-their-families/>

Hundreds of Tameside residents attend autism information event



The team who organised and volunteered at the event enjoy the day's success.

Over 300 people visited the Proud To Be Me drop-in autism event at Oxford Park on 23 April to access information and advice from a range of organisations.

The free event, by Tameside Council and partners, allowed those who are autistic (including waiting for a diagnosis or self-identifying), their families, and carers to speak with over 30 services at marketplace stalls. Attendees also took part in activities such as cooking, cycling, and visiting the pony patch.

Questionnaires were provided for residents to share their views on autism support, with sensory and quiet rooms available.

Organisations in attendance included Active Tameside, Tameside and Glossop Autism Assessment Team, Tameside Arts, and a variety of Tameside Council's teams.

Information on support is available at www.tameside.gov.uk/autism/supportavailable

Tameside leads the way in tackling flytipping

Tameside is once again the best performing council in the North West for investigating and taking enforcement action against flytipping.

Latest figures, published by DEFRA (Department for Environment, Food & Rural Affairs), show that in 2024/25 Tameside Council issued 224 fixed penalty notices for flytipping – more than anywhere else in the North West.

The council issued 279 fixed penalty notices in total for all waste offences including flytipping, littering and household duty of care – this is the second highest figure in the North West.

This is the second year running that Tameside Council has topped the

tables in taking enforcement action against flytipping. The council's waste enforcement and street cleaning officers are out every day investigating and clearing flytipping and they also hold regular days of action with their partners and the community to tackle hot spot areas and listen to residents' concerns.

You can check whether a waste carrier is licensed on the Environment Agency website at

environment.data.gov.uk/public-register/view/search-waste-carriers-brokers

For further information on reporting flytipping and useful information to provide to help investigations see www.tameside.gov.uk/flytipping



Enforcement and street cleaning officers tackling dumped waste

Sniffer dogs expose 8 Tameside shops in crackdown



Meet Fred, Sky and Dora - who helped uncover £15k worth of illegal tobacco products from eight shops in Hyde, Denton and Ashton.

The Wagtail sniffer dogs joined Tameside Council trading standards officers and Greater Manchester Police on the joint operation in March.

Officers carried out spot checks on businesses where intelligence and information provided by the local community pointed towards illegal activity.

Fred, Sky and Dora helped to reveal concealed hiding places in the premises and a total of 703 illegal vapes, 28,405

illegal cigarettes and 14.1kg of illegal hand rolling tobacco, four pouches of illegal shisha tobacco and 22 counterfeit toys were seized.

Further investigations are continuing and appropriate enforcement action will be taken against the premises.

In 2025/26, Tameside Council officers seized a total of 158,452 illegal cigarettes, 72kg illegal tobacco and over 6,000 illegal vapes as part of ongoing efforts to disrupt this criminal activity that causes real harm to the local community. Enforcement action is being taken against premises involved.

Car washes targeted in crackdown

Tameside car washes were targeted in multi-agency spot checks to ensure businesses are operating legally and safely.

Tameside Council environmental health and trading standards officers were joined by Greater Manchester Police and Immigration Enforcement on 22 April 2026 to visit five car wash premises in the borough.

Officers identified a range of issues across several sites, including:

- Breaches of health and safety regulations, including inadequate equipment and unsafe working environments
- Concerns around worker welfare, including poor facilities and lack of appropriate employment conditions

- Instances of non-compliance with trading standards requirements
- Individuals identified without the correct documentation to work in the UK

Officers undertook immediate follow up actions including detaining individuals, who will be investigated by immigration for further enquiries. Immigration will be taking further enforcement action in relation to this.

This is just one of numerous ongoing joint operations planned as part of efforts to tackle rogue businesses, protect the community and protect vulnerable individuals.

“He poisoned my dogs and threatened to hurt my family”

DOMESTIC ABUSE AWARENESS

A Tameside woman has told how she lived in fear for her life while trying to escape the grips of an abusive ex-partner.

The mum of three, who has asked to remain anonymous for her own safety, told how her former boyfriend poisoned her pet dogs, threatened to kill her and hurt her children as part of his campaign of terror after she ended their relationship.

In 2025 (Jan-Dec) there were 3443 stalking and harassment incidents reported in Tameside.

“I didn’t have a clue I was being stalked or coerced before I ended the relationship. But looking back there were lots of red flags which I wish I had paid more attention to before he pushed his way into my life,” said the 49-year-old stalking and harassment survivor.

She told how she had separated from her children’s dad when they were still young and had started online dating when they got older.

She said: “I connected with this man almost right away, we spoke online for weeks until we eventually agreed to meet. He seemed perfect – he was open, attentive and charming but with hindsight right from the start there were red flags. He seemed to already know an awful lot about me without me telling him – like he had been doing his research.



“After several months of seeing each other, it all seemed to be going okay and I felt safe enough to let him know where I live. But even then there were alarm bells, there were little jealous signs like him asking me about my male friends on Facebook. But I brushed it off.

“Then more odd behaviour started, he started turning up at my house in the middle of the night and he kept bringing round bags of his stuff that he left here. I felt tired and imposed upon but I was trying to focus on my work so I just let it go. But before I knew it he had moved himself in and his coercive, jealous and controlling behaviours got worse.

“He was constantly questioning me about when I would be home from work – when I tried to challenge this he said he would change but he soon went back to it. He would try to control what I was wearing and tell me I couldn’t go out looking like that, that I ‘looked like slag’.

“He then tried apologising and saying he loved me and wanted me to come and meet him and that he would take his own life if I didn’t go. I let the police know and they found him – waiting for me in his car armed with knives – and he was arrested. I don’t think he was planning to kill himself that day, he was planning to kill me.”

At this point she was put in touch with The Bridges Partnership, which provides domestic abuse support in Tameside.

She said: “It was so good to have some support, the Bridges Partnership caseworker was really helpful with practical tips and safety planning.”

There is specialist support for all victims of domestic abuse in Tameside, no matter what gender, age or background, at www.bridgespartnership.org.uk or call 0800 328 0967. You can also call them for help if you are concerned for a friend or family member. In an emergency you should always call 999.

Blind Side theatre production tours Tameside primary schools

The ‘Blind Side’ production by Breaking Barriers, commissioned by Tameside Council Public Health and Community Safety Partnership, has returned to Tameside schools to educate young people on violence against women and girls (VAWG).

The monologue follows teenager Summer as she navigates difficult relationships, controlling behaviour, and hurtful comments. The production revisited primary schools this April, including Millbrook Primary School, Denton West End Primary School, and Audenshaw Primary School, and secondary schools in November 2025 during the White Ribbon campaign.

The performance introduces schoolchildren to issues of VAWG and raises awareness of harmful attitudes. It is followed by a facilitated discussion, looking at key themes from the production. A pre-film is also shown.

For support, see www.bridgespartnership.org.uk

19



Pupils at Millbrook Primary School watched Blind Side along with Tameside Council’s Assistant Director of Education & Inclusion, Emlyn Wright.

Hyde resident celebrates life-changing success after quitting smoking

**BE WELL
TAMESIDE**

A Hyde resident is celebrating a massive personal achievement after successfully quitting smoking with support from Be Well Tameside.

On the Tameside Council-backed No Smoking Day on Wednesday 11 March, Keith Pearce, 55, hoped his story will inspire others thinking about giving up.

Keith had smoked around 20 cigarettes a day for roughly 25 years. Although he had been thinking about stopping, he felt he needed some extra motivation to make the first move. After hearing about Be Well, he decided to get in touch and start his journey to kick the habit.

Be Well Tameside worked closely with Keith to find the nicotine replacement options that suited him best. Although he was given nicotine patches, he preferred the inhalator at first as it helped replace the hand-to-mouth action he was used to.

After a while, Keith was given a vape, which he's gradually reducing his use of, as part of his plan, which has transformed his experience. Regulated vaping is a much safer alternative to smoking and when combined with behavioural support this has shown to be twice as effective for quitting smoking.

Be Well will also help an individual quit vaping by gradually lowering the strength of their vape to help people become nicotine-free and quit entirely.

He explained: "The vape changed everything. I felt like I was fully in control of my intake. Although at first giving up does give you a cough, you have the real understanding that your chest is clearing out all the toxins."

Keith quickly noticed the financial benefits of quitting.

Having smoked for many years, he was shocked by how much he had been spending.

He added: "I didn't realise how big the savings are. It was around £108.50 per week. So I can treat myself to something or pay a bill instead of killing myself with nicotine."

Three months on, Keith says he can now be around other smokers without feeling the urge to have one and feels more in control than ever.

"I've now got to the stage where I can cope with other smokers without having the craving to have one. I am just happy with my vape," he said.

Be Well Tameside provides free and confidential advice to help residents quit smoking, offering personalised plans, ongoing support and access to nicotine replacement options.

For anyone planning to stop smoking or wanting to improve their health, support is available.

For free and confidential help to quit smoking, contact Be Well Tameside at www.tameside.gov.uk/bewelltameside or call 0161 342 5050.



Tameside pubs serve up mental health support



Pubs have something new on the table to support people who may be struggling with their mental health.

Tameside Council and partners from Tameside Suicide Prevention Action Group have got together with Tameside Pubwatch to develop and distribute unique 'menus' to be displayed in bars across the borough.

The menu-style resource, which supports the Greater Manchester's Shine a light on Suicide campaign, lists 'Starters', such as conversation starters, 'Mains', such as

the main pressures people may be feeling, and 'Desserts', which signpost to local support. There is also a list of 'Specials' highlighting where people can get help in a crisis.

Men accounted for 81% of suicides in Tameside between 2022 and 2024 and it is hoped the bespoke pub menu will help reach more people - but men in particular - with support when they need it. It offers guidance about spotting the signs of someone feeling suicidal, understanding what might be going on and offering choices about where to turn to for help.

For more information on local mental health support services see www.tameside.gov.uk/helpinghand

Everyone is also encouraged to take part in Zero Suicide Alliance's free online training to help save someone who may be thinking of taking their own life at shininglightonsuicide.org.uk/learn-to-save-a-life

Tameside announces new Civic Mayor



Tameside's new Civic Mayor Cllr Helen Bowden and consort Mr Leslie Bowden

Cllr Helen Bowden has been appointed Tameside's new Civic Mayor for 2026/27.

Cllr Bowden held the position of deputy mayor for 2025/26 and was elected to Tameside Council in 2007, representing the Hyde Newton ward.

Known for her involvement in community activities, she works with mental health groups. Beyond her public duties, she loves helping people and has a range of interests in sports, including football and cycling.

The new civic mayor's chosen charities include People First Tameside, Hyde Festival Theatre and the Wooden Canal Boat Society Ltd.

Her husband, Mr Leslie Bowden, will be her consort and her chaplain is Linda Marshall.

The new deputy mayor is Councillor Jacqueline Owen, who represents Longdendale ward.

Mossley Community Centre secures long term lease to protect its future

Mossley Community Centre is set for a stable future as Tameside Council takes forward a proposal to enter a new long-term lease with the centre's trustees.

The renewal of the lease will secure the centre's status as a dedicated community facility, allowing it to continue delivering a wide range of activities and services for residents of all ages. More than 600 people use the centre each week, and it plays a key role in supporting inclusion, social connection and wellbeing across Mossley.

First government-funded veteran centres launched

A new national programme means that Tameside ex-forces personnel will soon be offered support designed to transform how they, their families and the wider Armed Forces community access support across health, housing and employment within the city region.

VALOUR is a groundbreaking approach that makes it easier for current and former armed forces personnel to get all the support and care they require in one place.

Greater Manchester has been successful in a joint bid to deliver a VALOUR Recognised network. Across the city region, current and former armed forces personnel will be able to access support through the enhanced Live Well offer for the Armed Forces Community.

As part of this, Tameside will receive a share of £1 million in funding to deliver targeted and dedicated support locally in partnership with armed forces organisations, charities and networks.

The wider £50 million VALOUR programme will include a headquarters in the Office for Veterans' Affairs in the Ministry of Defence, field officers and an online support platform. The system will work together to share data and form better connections between local charities, councils and service providers.



I thought being single and working full-time were barriers to fostering

Join the
FOSTERING FAMILY
in Tameside



Emma Collins, foster carer and full-time Business Support Manager.

BUSINESS Support Manager Emma Collins started fostering after discovering that being single and working full-time are not barriers to being a foster carer.

The 53-year-old, who lives in Dukinfield, is single, works full-time for Tameside Council's engineering service and has two biological children of her own, aged 23 and 27. Emma was surprised to learn that being single, working full-time and living alone didn't prevent her from becoming a foster carer, as she had not been aware of the different types of fostering.

After finding out more, Emma became an emergency and respite foster carer with Tameside Council in November 2025 for children aged between 0 and 10 years old.

Emma said: "It's so flexible, which is perfect as it fits in with my lifestyle. If I've got something social like going out with my friends or a show, I can still do it, and if I want to go on

holiday, I can just block it out and say I'm not available." "I cared for a child over Christmas, and a few weeks later their foster carer and the child turned up at my door with a bunch of flowers and a personalised card.

"People really do build a community around each other and fostering full-time is definitely something I'd like to do when I retire. If I had a bigger house, I'd be caring for more kids!"

Emma works at Tameside Council, which is a Foster Friendly Employer. This means that foster carers will receive an additional 10 days' annual leave, extra support from their manager and more.

To anyone considering becoming a foster carer, Emma said: "Just give it a go, there's nothing to lose because even if you do your first placement and you decide it's not for you, you can stop, it's not a lifelong commitment.

"As long as you find it a pleasure and you're doing it for the right reasons you're going to thrive doing it."

Anyone can foster as long as applicants are 21 years or older, have a spare room (unless you're fostering a child under the age of two), and can offer a safe and loving home.

The council provides full training, including online opportunities to increase flexibility, support and an allowance.

Anyone who has been inspired by Emma to enquire is encouraged to get in touch by calling 0300 303 0321 or visiting www.fosterforgm.com/tameside

Adoption journey shows how families come in all shapes and sizes

A BUSINESSWOMAN who always wanted to start her own family has shared her adoption journey to highlight the difference it can make to a child's life.

Adoptive parent Jessica, whose real name has been changed to protect her identity, has given an insight into what to expect when going through the adoption process.

Jessica was approved to adopt in 2024, and one month later was matched with Leo under early permanence. Early permanence is where a child is placed with carers as early as possible, with the plan that those carers may go on to become the child's adoptive parents if they cannot return to their birth family.

Jessica cared for Leo while court proceedings were ongoing and took part in birth parent contact, visiting his birth mum four times per week for over a year.

Jessica said: "If you'd asked me before, I was a bit worried about hostility towards me as an adopter, but it wasn't like that at all. It was a real benefit as it gave us a chance to get to know each other.



A stock image representing Jessica and Leo having fun together.

Leo is now two years old and settled into family life and Jessica has just started the adoption process for a second time.

To anyone considering adoption, Jessica said: "Start the process! Don't delay because you're worried about having the perfect home, good enough finances or the right time. Make that first enquiry and I think you'll find out loads about adoption that you didn't know."

Find out more about adopting in Tameside by visiting www.adoptionnow.org.uk or calling 01204 336096.

What's On



There's always something going on in Tameside, whether you're keen on exploring our fabulous countryside spaces or learning more about our heritage, history or culture in indoor places.

Look out for the return of Stalybridge Street Fest and Mossley Farmers Market, as well as half-term activities. For all the latest events, visit www.intameside.co.uk

Time for a Rhyme

Join the fun at rhyme time! Come along and join the library staff for singing, rhymes and stories. Sessions are suitable for children up to 4 years old.

Mondays:

Hattersley Library, 2:15pm

Mossley Library, 2:15pm,

Denton Library, 2:15pm

Tuesdays:

Stalybridge Library, 10am,

Hyde Library, 10:30am

Wednesdays:

Ashton Library, 10am

Thursdays:

Dukinfield Library, 2:15pm,

Droylsden Library, 9:30 & 10:30am

Lego Clubs

Join us and build fantastic Lego creations. Lego Club is aimed at children aged 7+ and their parents and carers. No need to book, just drop in.

Ashton Library

4th Tuesday of the month 4 - 5pm

Stalybridge Library

1st Wednesday of the month

3:30pm-4:30pm

Tea & Tales

Adults are welcome to join us to chat, share stories, listen to poetry & prose and have fun.

Hattersley Library

1st Thursday of the month

1:30 - 2:30pm.

Tel: 0161 342 4000, option 5.

Stalybridge Library

3rd Wednesday of the month

10:30 - 11:30am.

Tel: 0161 342 4000, option 8.

Library Club's

Droylsden Library Club

1st Wednesday of the month

10am - 11:30am

Dukinfield Library Club

2nd Wednesday of the month

10:30am - 11:30am

Book Time for Yourself. Free, friendly and relaxing weekly book clubs. Unlike standard readers' groups members do not need to read the book or short story before coming to a session making them pressure free.

Mossley Library

Wednesday 10:30am - 12noon.

Tel: 0161 342 4000, option 7.

Dukinfield Library

Thursday 10:30am - 12noon (during Open+ hours).

Tel: 0161 342 4000, option 4.

Denton Library

Friday 9:30am - 11am.

Tel: 0161 342 4000, option 2.

Library Readers' Groups

Friendly and informal discussions about a different novel every month. For more details, ask at your local library.

Get Started With Learn My Way

Learn My Way Courses are free and simple courses for beginners. Come along to our free workshop to help you get started using your device and getting online.

Every Tuesday 11am-12noon - Ashton Library.

Tel: 0161 342 4000, option 1.

Get Started With Online Job Searching

Come along to our free workshop to help you get started using online tools for job searching for help on CV writing and managing the search and application process. This session will help you build skills and confidence.

Every Wednesday 11am-12noon - Ashton Library.

Tel: 0161 342 4000, option 1.

Get Started With iDEA

iDEA offers free online courses to improve your digital skills; collect badges as you complete an award. iDEA is a scheme for the digital age similar to the Duke of Edinburgh Awards. **Every Thursday 3:30-4:30pm - Ashton Library.**

Tel: 0161 342 4000, option 1.

Knitting and Stitching Group

Come along to knit, crochet, chat, be inspired, share knowledge and ideas. **Every Friday 1:30-3:30pm - Droylsden Library.**

Tel: 0161 342 5700.

Exhibitions

Ashton Market Hall Gallery

Regular exhibitions by artists from the Tameside area.

Portland Basin Museum

Regular historical exhibitions covering a range of Tameside themes, stories, and local heritage topics. There are also regular Make, Do, Play craft sessions. **Open Tuesday - Sunday 10am-4pm, free entry.**





Helping Hand support in Tameside



Support services in Tameside to help you manage the cost of living

If you're struggling with the cost of living, Tameside Council's Helping Hand service connects you to local support. Whether you need help managing money, improving mental health, finding housing support, or accessing food banks, we're here for you.

Get advice on energy savings, financial support, and employment opportunities - all in one place. Everyone needs a helping hand sometimes, and support is available when you need it.

Visit our Helping Hand webpage to find local services ready to support you.

tameside.gov.uk/helpinghand