

# Market Street Gateway

‘A Proud Welcome’

A vibrant gateway into Stalybridge is proposed, designed to welcome people into the heart of the town centre and serve as a key point of arrival. The pedestrian-friendly street will encourage people to dwell, improve connections to the train station, reduce the dominance of vehicles, and enhance legibility into the town centre. Footpaths will be widened, with new street furniture and planting introduced to create a welcoming and comfortable streetscape.

## An illustration of the future Market Street Gateway



Existing Aerial Plan of Market Street



View of Market Street & Waterloo Road junction



Artistic Impression

### Proposed Design Moves:

- Introduce street furniture such as benches, wayfinding elements, and improved lighting.
- Footpaths widened and resurfaced.
- Proposed pedestrian crossings to prioritise pedestrian movement.
- Carriageway narrowed and resurfaced to tie in with Market Street Phase 1.
- Space provided for spill-out areas from cafés and restaurants.
- Proposed sustainable urban drainage system utilising planting along the street.
- Designated parking and loading bays proposed.

### Changes to movement:

- One-way vehicle movement is proposed, tying into Market Street Phase 1. The direction would be westbound, up to the junction at Waterloo Road and Stamford Street (subject to approval).
- Pedestrian footpaths are widened and vehicle junction radii reduced to encourage lower traffic speeds.

# Old Town Hall Gardens

‘Our Town Garden’s Re- Discovered’

The public realm proposal for Old Town Hall Gardens draws inspiration from its past as a civic heart of the community. The design blends heritage, nature, and functionality to create a vibrant space for daily use. Proposed artwork tells the tales of the past and outlines the former site of the Old Town Hall. The Gardens will serve as a welcoming gateway into the town, connecting with the historic Trinity Street corridor and improving sight lines to key landmarks such as Cocker Hill and Market Street.

## An illustration of the future Old Town Hall Gardens



Existing Aerial Plan of Old Town Hall Gardens



View in Old Town Hall Gardens looking up to Stamford Street



Artistic Impression

### Proposed Design Moves:

- Proposed lighting along pathways.
- Resurfaced footpaths and integrated artwork.
- Improved seating in the area.
- Informal play highlighting the shape of the former town hall building, including a stage and stepping stones.
- Introduce event lighting into central space.
- Clean and refurbish the amphitheatre, with improved seating installed on the terraces.
- Clear the over-grown vegetation to allow the existing tree avenue to thrive and improve sight-lines across the space.

# Armentieres Square

‘Where community, nature & heritage meets the water’s edge’

Imagine Armentieres Square transformed into The People’s Square — a vibrant, welcoming heart of Stalybridge. This re-imagined space builds on its role as a beloved gathering spot, where friends meet and the community comes alive. Designed to ignite a renewed sense of connection and pride, The People’s Square will become a dynamic hub for both grand celebrations and simple, everyday moments.

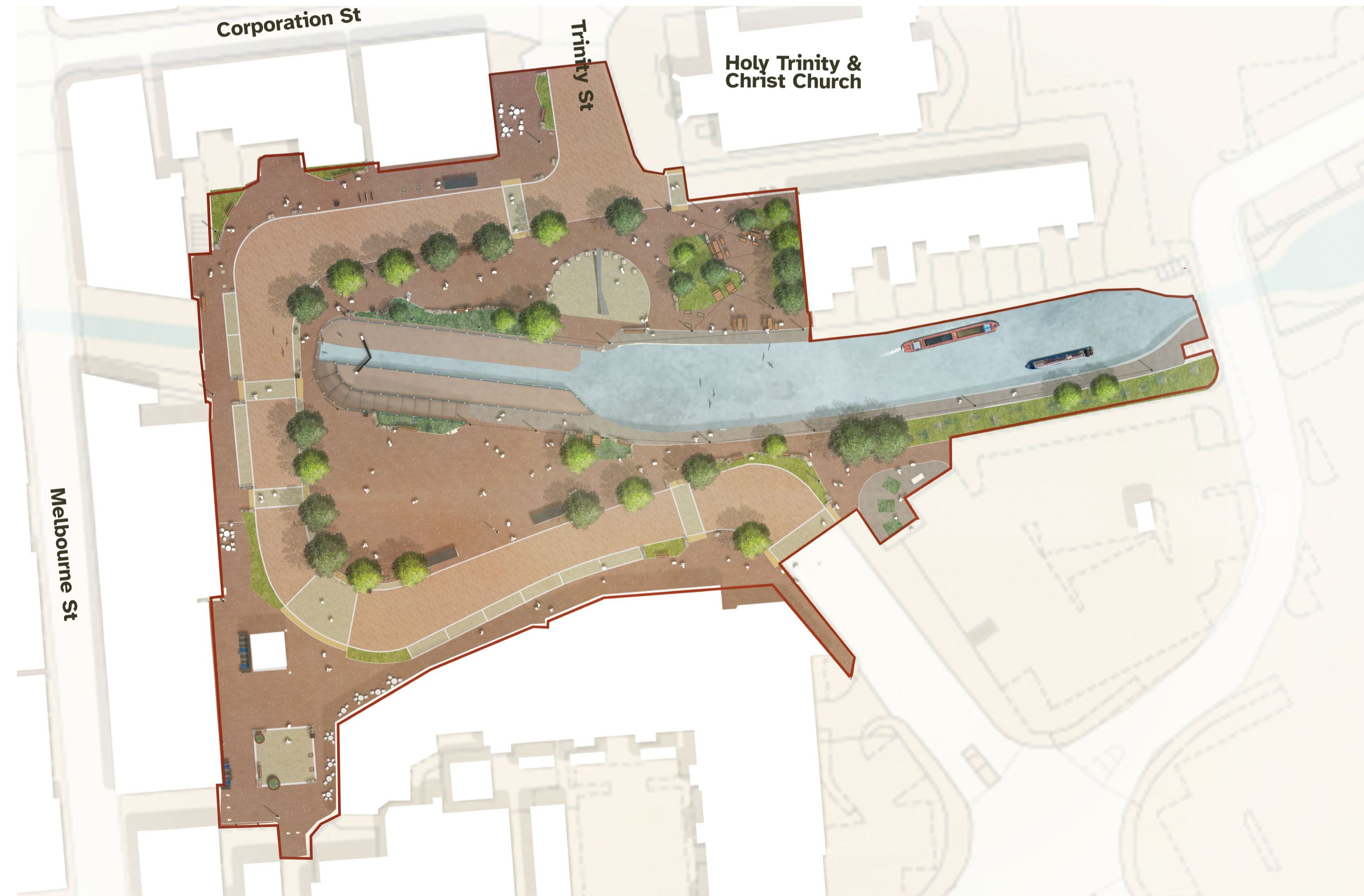
## An illustration of the future Armentieres Square



Existing Aerial Plan of Armentieres Square



View from Armentieres Sq including Rose Terrace, the existing sundial and canal.



### Proposed Design Moves:

- Perimeter footpath widened with opportunities for spill-out.
- Existing paving to be cleaned, restored, and re-used.
- Improved planting areas.
- Removal of existing railings around the canal (railings around the lock to be retained).
- A range of accessible seating opportunities provided.
- Existing event space supported with additional power points ( subject to approval).
- Pedestrian crossing points introduced to prioritise pedestrian movement.
- Improved connections to Melbourne Street and Grosvenor Street.
- Improved lighting throughout the space.
- Carriageway resurfaced and narrowed.
- Designated parking and loading bays proposed.

# Armentieres Square

‘Where community, nature & heritage meets the water’s edge’

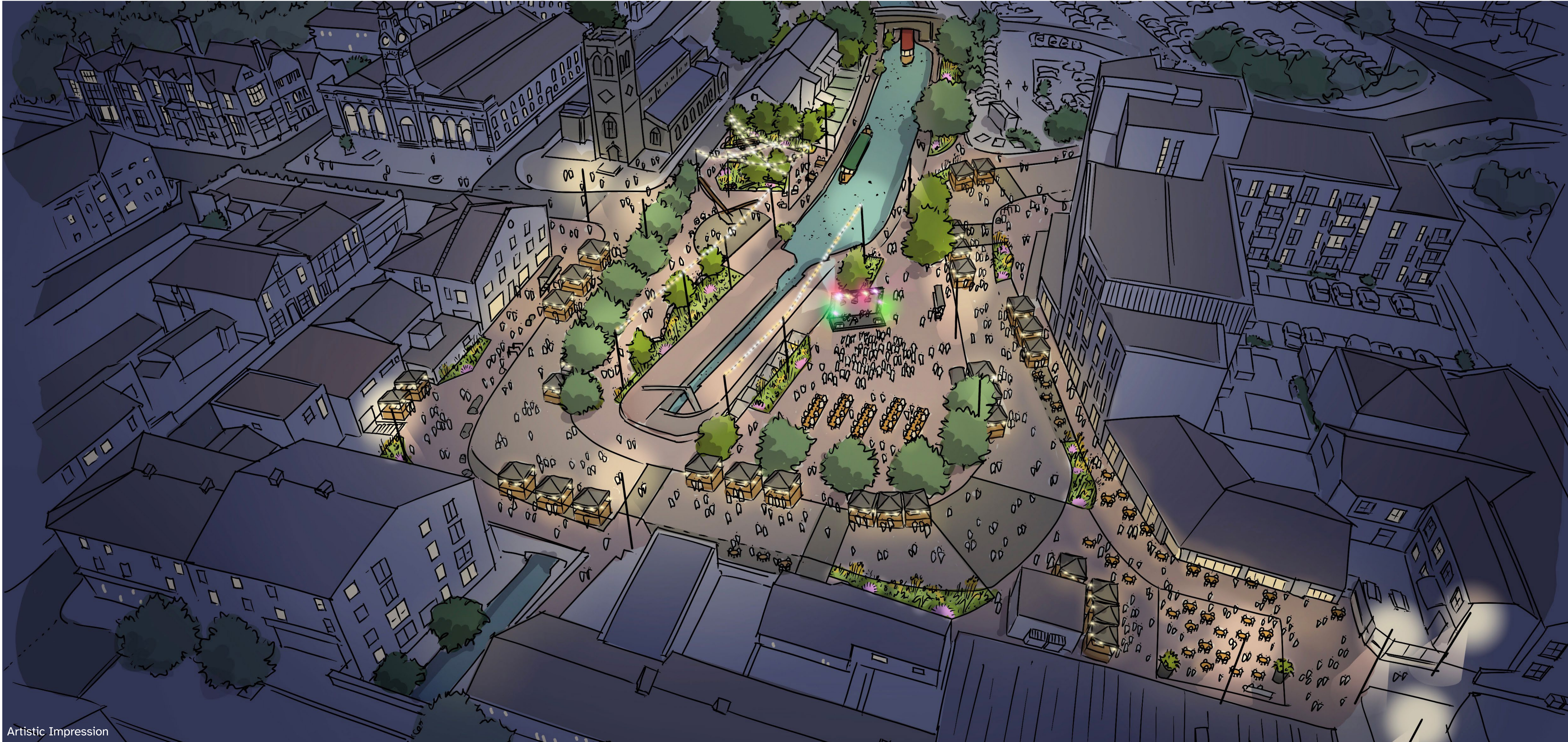
## Events and flexibility in the square

The existing square hosts an exciting calendar of town events throughout different seasons. The redesign of the square looks to support these activities and tie the space into the larger network of events and offerings within the town.



Above: Precedent image

## What events in Armentieres Square could look like



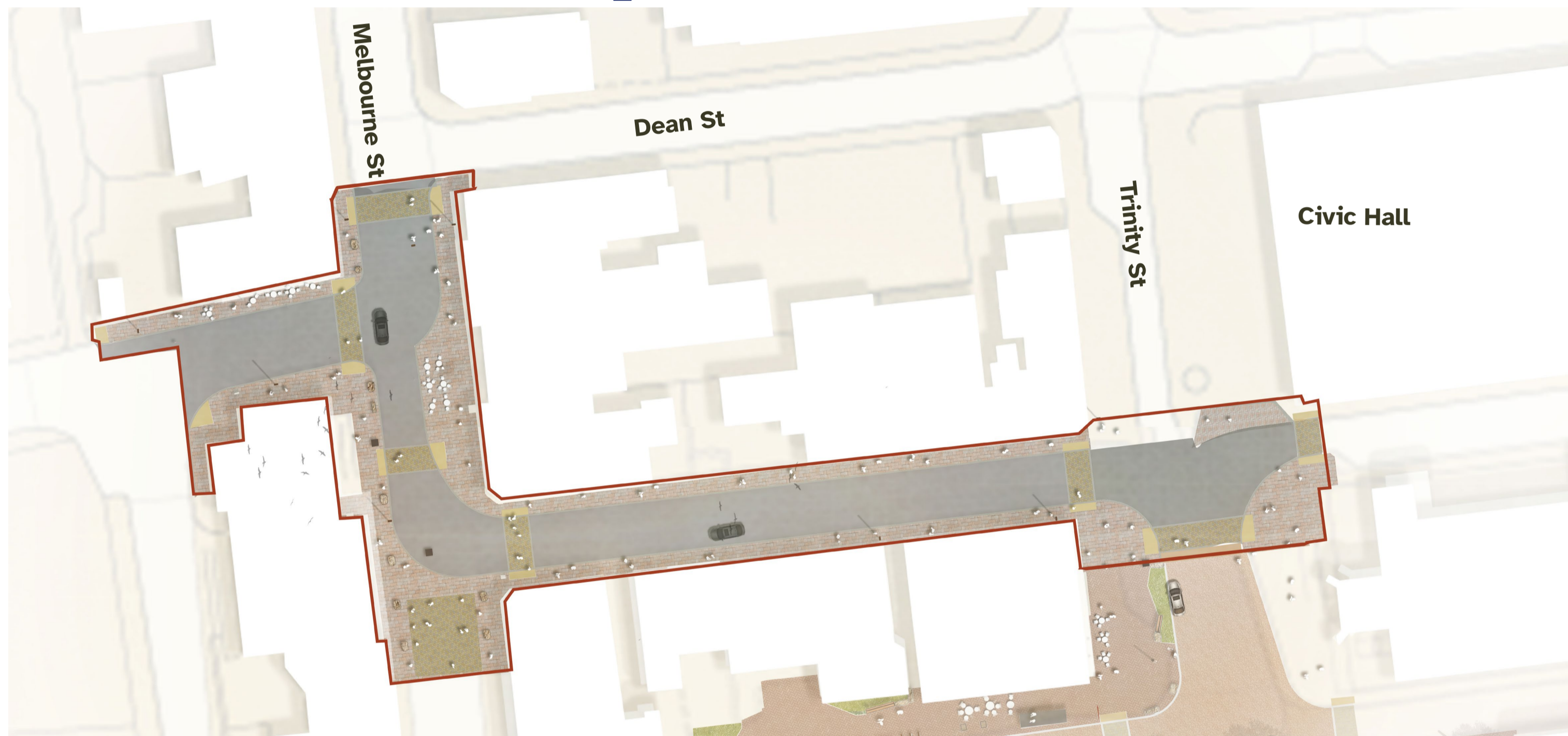
Artistic Impression

# Corporation Street

‘Stalybridge’s charming street’

The project reimagines Corporation and Melbourne Street as vibrant, pedestrian-friendly corridors that celebrate the town’s industrial heritage. These streets have the potential to become active, inviting spaces that connect people with the town’s history, architecture, and landscape, enhancing daily life for residents and visitors alike.

## An illustration of Corporation Street

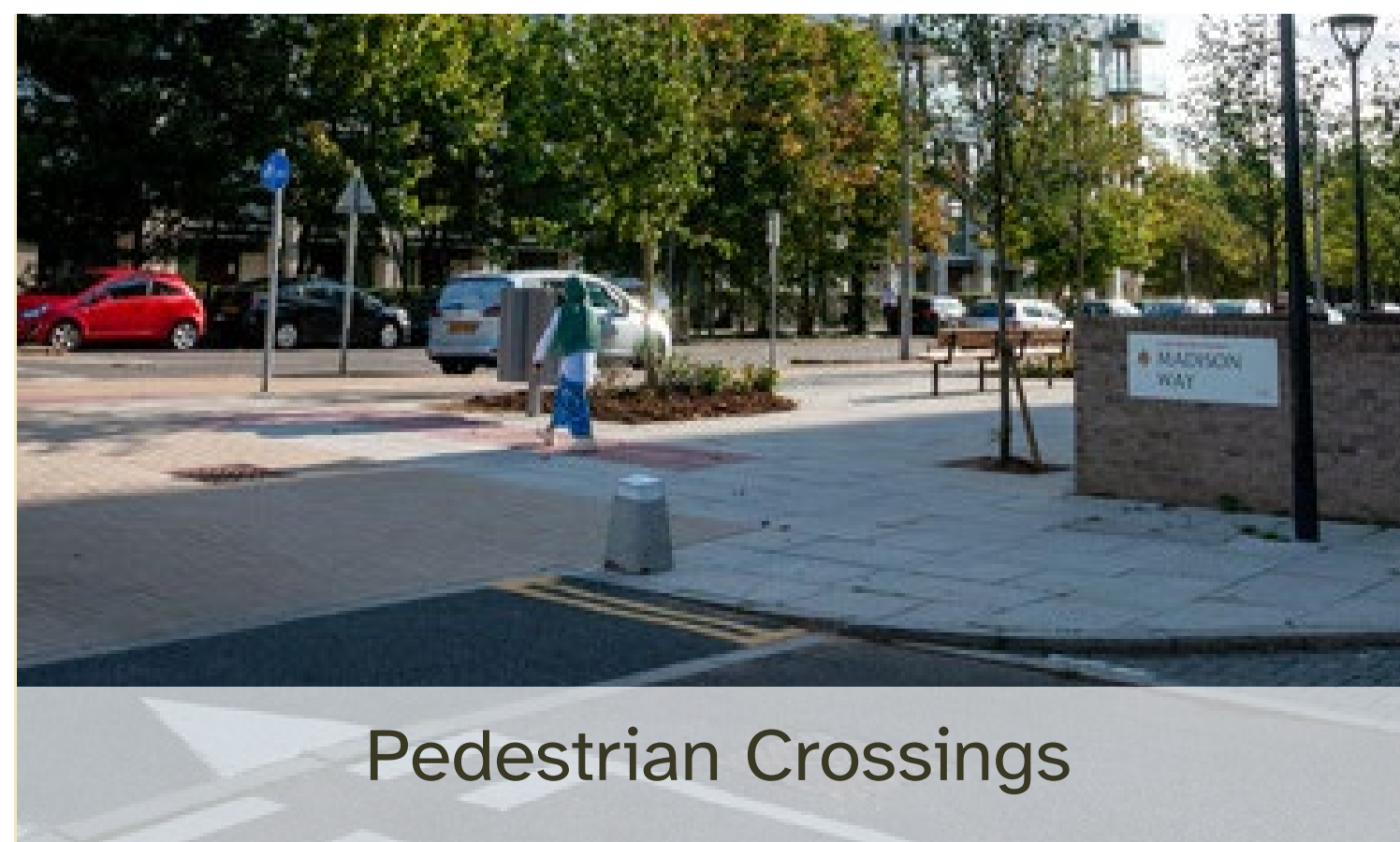


### Proposed Design Moves:

- Pedestrian crossing points introduced to prioritise pedestrian movement.
- Resurfaced paving to visually connect to other areas in the town.
- Widened footpath.
- Proposed street lighting.



Spill-out onto the street



Pedestrian Crossings

# Grosvenor Square

‘Our independent High Street’

Grosvenor Square will become a vibrant, welcoming space at the heart of Stalybridge. Simple changes will boost day and night activity, improve safety with better lighting, create space for local businesses, and add furniture for social use. The square will support events and reconnect to Gorse Hall and Cheetham Park through improved planting and playful wayfinding.

## An illustration of the Grosvenor Square



### Proposed Design Moves:

- Improved planters and seating.
- Existing paving cleaned and repaired.
- Proposed paint with bold and interactive graphics.
- Improved lighting.



Playful painted street



Planting & seating